

VI.C.

## ***VOLUNTARY INTERDISTRICT CHOICE CORPORATION***

### **REPORTS**

#### **2007/08 STUDENT ATTENDANCE RECOMMENDATIONS/ANALYSIS**

**NOVEMBER 20, 2009**

#### **Executive Summary**

VICC recently completed its review of VST attendance for school year 2007/08. For the fifth straight year, the overall average student transfer attendance rate continued a trend of annual increases and now stands at 92.38% overall. Otherwise, no significant new findings were identified compared to prior years' data. GPA, school district and age continued to be the three factors having the strongest correlation with attendance rates. In fact, attendance rates are highly consistent between years in almost every aspect. A copy of 2007/08's analysis and related recommendations is attached.

The idea of analyzing transfer student attendance was originally initiated by VICC's Parent Advisory Committee and first prepared for 2002/03. It is now one of the major reports VICC prepares each year. The findings and recommendations from 2007/08's study, along with supporting detail, are presented in the accompanying report.

This comprehensive effort was undertaken with the goal of determining what variables had the greatest impact on transfer student attendance and to identify any developing trends. Attendance and other demographic data for each individual transfer student was collected directly from school districts for the 2007/08 school year and compiled into a comprehensive database. A number of factors were then analyzed:

- Age (elementary/middle/high)
- Gender
- Economic status (Free & Reduced Meal)
- Special education status
- Geographic location
- Bus contractor used
- Academic status (grade point average)
- Distance from school (ride time)
- School district attended

Various combinations of these factors were also considered. Longer term, year-to-year trends were also analyzed. The final result is the accompanying report of comparative data, along with an enlightening list of observations and recommendations to improve student attendance for your district's consideration. These observations and recommendations are generally consistent with the prior five years' reports. As an overall statement, attendance rates were consistently improved in almost every measure:

- 10 out of 14 districts;
- 3 out of 4 areas;
- 3 out of 3 grade levels (elementary, middle and high);
- Both boys and girls;
- 4 out of 5 bus ride time measures;
- 3 out of 3 GPA measures;
- Both free & reduced lunch categories;
- Both IEP status levels;
- 3 out of 3 bus contractors.

Of course, boosting the attendance rate even further would yield both academic and financial dividends. For example, each 1% improvement in attendance results in more than \$460,000 of additional state funding for VICC. It would therefore be helpful if you would share this information with others in your district and your district's schools who can continue to positively influence transfer student attendance in the future.

Attachment

---

Recommended motion . . . . . report and discussion only; no action required.

**VICC**  
**PARENT ADVISORY COMMITTEE**  
**2007/08 STUDENT ATTENDANCE ANALYSIS**  
**(NOVEMBER 20, 2009)**

1. Observations
2. Recommendations
3. Total Rate by Area
4. Rate by Building Level per Area
5. Rate by Building Level per District
6. Rate by Building Level and School per District
7. Total Rate by Gender
8. Rate by Gender per Building Level
9. Total Rate by Free & Reduced Lunch Status
10. Rate by Free & Reduced Lunch Status per Building Level
11. Rate by GPA
12. Total Rate by IEP
13. Rate by IEP per Building Level
14. Rate by GPA and Gender per Building Level
15. Rate by Gender and IEP/FRLunch Status per GPA Level
16. Total Rate by Zip
17. Total Rate by Zip per Area
18. Rate by Ride Time
19. VICC versus City School Attendance
20. Attendance Rate by Bus Contractor
21. Rate by District

**VICC**  
**2007/08 Attendance Analysis**  
**Report #1**  
**Observations**

1. The overall student attendance rate remains below the state average of 93-94% but is nonetheless fairly strong (over 92%) and is up slightly (+.29%) for the fifth year straight. This increase is the equivalent of nearly a full day of school per student per year.
2. Attendance rates are extremely comparable between all four attendance areas in total and between all four attendance areas by school level (elementary, middle and high). This generally held true at the zip code level as well.
3. Attendance rates tended to decline with age. Elementary attendance is best (93.95%); high school is worst (90.59%). This pattern has been evident every year and is generally consistent with resident students as well.
4. Smaller school districts generally continued to show slightly better than average student transfer attendance rates, particularly at the middle and high school level.
5. Gender once again did not seem to be a significant factor in attendance at any school level (92.28%F vs. 92.49%M overall). However, 2007/08 was the second year straight that overall male attendance was higher than female.
6. Economic status appeared to only slightly influence attendance rates at each school level. Specifically, the attendance rate for students having free & reduced meal status was only about 2% lower than students not on free & reduced meals (92.09% F&R vs. 93.89% not F&R).
7. Consistent with the past two years, the factor most directly correlated to attendance rates at the middle and high school level is GPA. The attendance rate for students with a 3.0 GPA or better (323 students) is over 95%; for students with 2.0-2.9 GPA (1,074 students) it's almost 93%; and for students below 2.0 GPA (1,419 students) it's about 88% - - all similar to prior years' statistics. It would therefore appear that students who are academically comparable to resident students have attendance rates that are likewise comparable to county resident students.
8. The IEP status of a student has a moderate correlation with attendance, accounting for about a 3% difference at the high school level but only a 1-1.5% difference at middle and elementary levels. Considering that nearly three quarters of student transfer IEP's are for learning disabilities, this may be more reflective of academic (GPA) difference than of special education status - - at least at the high school level.
9. Attendance rates appeared not to be correlated to distance from school. Students living in closer proximity to the city/county boundary line attended school at about the same rate as those living in the far northern and eastern portions of the city. In fact, every zip code containing at least 100 students had an attendance rate between 91.4-93.7%
10. Bus ride times did not appear to have an impact on attendance as the attendance rate for the longer routes (over an hour) was comparable to the rate for shorter routes (under an hour).

11. Consistent with last year, transfer student attendance rates at all three school levels were higher than for the corresponding non-magnet SLPS schools, especially at the high school level. In fact, the high school VST attendance rates even exceeded SLPS magnet school rates while elementary school VST attendance was about the same and middle school VST was only slightly lower.
12. The specific bus contractor used may have a small effect on student attendance. For two years straight now, Durham riders have been highest at over 93% while Laidlaw has been about 2% less than that. However, it is not clear whether this is a result of the bus company service or a result of the districts each company serves - - i.e. Durham's districts are primarily smaller districts while Laidlaw's primary district is Parkway, a larger district. Prior to the 2005/06 school year, the bus contractors all had comparable attendance rates.
13. Ranking of factors in order of impact on attendance:
  - a. GPA (7.23%)
  - b. School district (4.00%)
  - c. Age (3.36%)
  - d. IEP Status (2.24%)
  - e. Bus Contractor (2.36%)
  - f. F&R Status (1.80%)
  - g. Ride time (1.28%)
  - h. Gender (0.11%)
14. Each 1% of attendance represents about \$460,000 in state aid at 2009/10 funding levels.

**VICC**  
**2007/08 Attendance Analysis**  
**Report #2**  
**Recommendations**

1. A detailed student attendance analysis similar to this one should continue to be prepared by VICC on an annual basis, reviewed by the Parent Advisory Committee and provided to each participating school district (and school building).
2. Schools with student attendance rates below certain threshold levels should be identified for further analysis. This would include any school with thirty (30) or more transfer students whose attendance was more than 3% below the average rate for all schools at the same level (elementary, middle or high). For 2007/08, six schools fell short of this standard:

	%	# Students
Buerkle Middle (Mehlville)*	89.40%	59
South High (Parkway)*	84.52%	201
Claymont Elementary (Parkway)	90.62%	39
Fern Ridge High School (Parkway)	83.16%	31
Instructional Learning Center (Rockwood)	85.22%	46
Valley Park Senior High (Valley Park)	86.68%	53

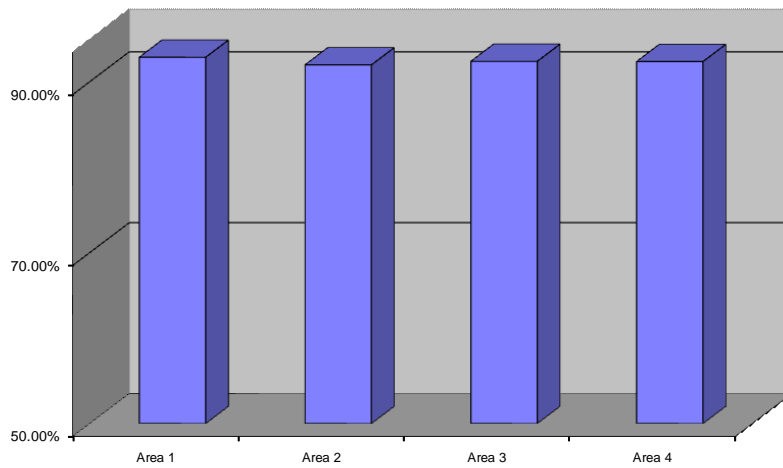
\* 2007/08 is the third consecutive year this school has been a negative outlier for student attendance.

3. Efforts by districts to improve both attendance and the academic achievement levels of student transfers need to continue. At the same time, we need to determine whether better attendance leads to greater achievement or whether greater achievement leads to better attendance.
4. The strong correlation between good attendance and achievement should continue to be emphasized with parents.

**VICC**  
**2007/08 Attendance Analysis**  
**Report #3**  
**Total Rate by Area**

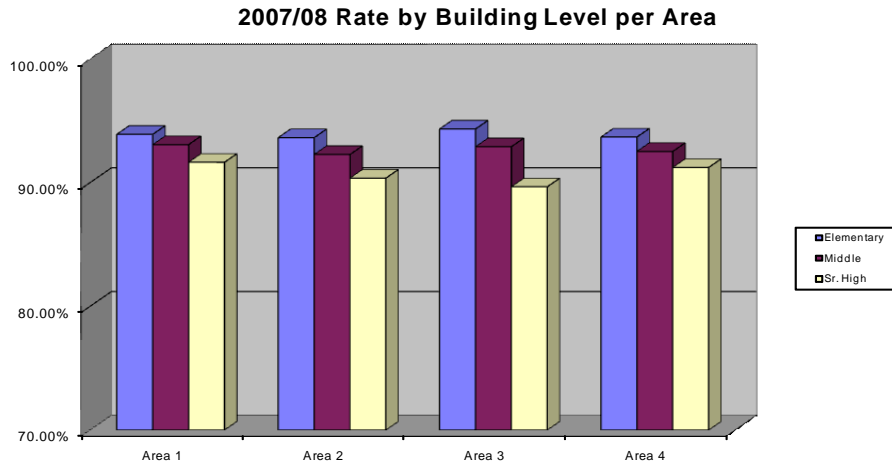
<i>Attendance Area</i>	<i># of Students</i>	<i>Rate</i>	<i>06/07 Rate</i>
<i>1</i>	1977	92.87%	92.33%
<i>2</i>	2066	91.98%	92.25%
<i>3</i>	2301	92.39%	91.87%
<i>4</i>	1174	92.37%	91.82%
<b><i>Total</i></b>	7518	92.38%	92.09%

**2007/08 Rate by Area**



**VICC**  
**2007/08 Attendance Analysis**  
**Report #4**  
**Rate by Building Level per Area**

<i>Attendance Area</i>	<i>Building Level</i>	<i># of Students</i>	<i>Rate</i>	<i>06/07 Rate</i>
<i>1</i>	Elementary	736	93.90%	93.90%
	Middle	526	93.07%	92.83%
	Sr. High	715	91.64%	90.26%
<i>2</i>	Elementary	675	93.63%	93.77%
	Middle	563	92.27%	91.99%
	Sr. High	828	90.36%	91.16%
<i>3</i>	Elementary	886	94.33%	93.76%
	Middle	634	92.90%	92.41%
	Sr. High	781	89.66%	89.51%
<i>4</i>	Elementary	391	93.68%	92.81%
	Middle	288	92.52%	92.35%
	Sr. High	495	91.22%	90.12%



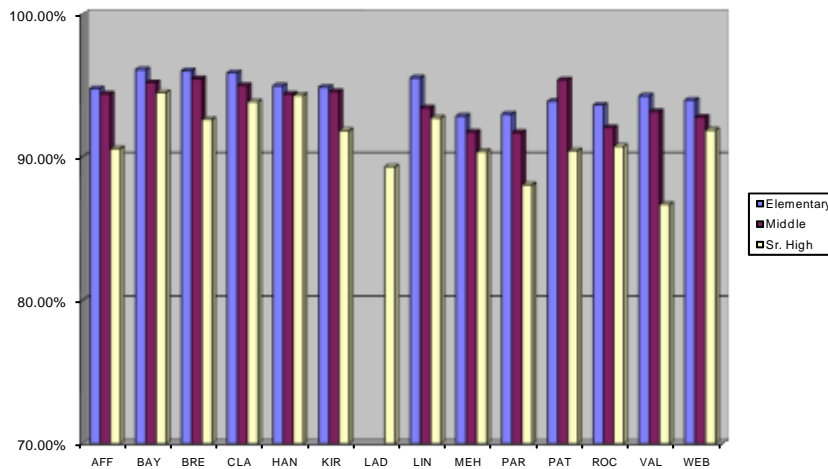


**VICC**  
**2007/08 Attendance Analysis**  
**Report #5**  
**Rate by Building Level per District**

<i>Dist</i>	<i>Building Level</i>	<i># of Students</i>	<i>Rate</i>	<i>06/07 Rate</i>
<i>AFF</i>				
	Elementary	51	94.74%	93.00%
	Middle	37	94.39%	91.65%
	Sr. High	52	90.56%	90.77%
<i>BAY</i>				
	Elementary	57	96.08%	94.93%
	Middle	40	95.17%	94.63%
	Sr. High	28	94.47%	93.99%
<i>BRE</i>				
	Elementary	51	95.99%	95.44%
	Middle	40	95.44%	93.98%
	Sr. High	46	92.60%	93.56%
<i>CLA</i>				
	Elementary	205	95.85%	95.62%
	Middle	117	94.97%	95.93%
	Sr. High	156	93.84%	91.42%
<i>HAN</i>				
	Elementary	200	94.95%	94.47%
	Middle	93	94.37%	94.83%
	Sr. High	97	94.28%	92.83%
<i>KIR</i>				
	Elementary	186	94.84%	94.07%
	Middle	135	94.54%	93.32%
	Sr. High	231	91.83%	89.97%
<i>LAD</i>				
	Sr. High	20	89.30%	88.70%
<i>LIN</i>				
	Elementary	74	95.50%	96.23%
	Middle	124	93.41%	93.02%
	Sr. High	128	92.71%	93.68%
<i>MEH</i>				
	Elementary	266	92.83%	94.26%
	Middle	232	91.72%	91.83%
	Sr. High	419	90.35%	91.16%
<i>PAR</i>				
	Elementary	618	92.97%	93.13%
	Middle	508	91.70%	91.68%

<i>Dist</i>	<i>Building Level</i>	<i># of Students</i>	<i>Rate</i>	<i>06/07 Rate</i>
<i>PAR</i>				
	Sr. High	650	88.04%	87.40%
<i>PAT</i>				
	Elementary	2	93.86%	93.20%
	Middle	25	95.36%	92.19%
	Sr. High	66	90.41%	92.13%
<i>ROC</i>				
	Elementary	779	93.59%	92.74%
	Middle	526	92.03%	91.73%
	Sr. High	765	90.73%	90.47%
<i>VAL</i>				
	Elementary	93	94.25%	93.99%
	Middle	54	93.14%	92.74%
	Sr. High	53	86.68%	93.28%
<i>WEB</i>				
	Elementary	106	93.95%	92.20%
	Middle	80	92.75%	91.90%
	Sr. High	136	91.86%	90.63%
<i>All Districts</i>				
	Elementary	2688	93.95%	93.67%
	Middle	2011	92.72%	92.39%
	Sr. High	2847	90.59%	90.28%

**2007/08 Rate by Building Level per District**



**VICC**  
**2007/08 Attendance Analysis**  
**Report #6**  
**Rate by Building Level and School per District**

<i>Dist</i>	<i>School</i>	<i># of Students</i>	<i>Rate</i>	<i>06/07 Rate</i>
<b>AFF</b>				
	<i>Elementary</i>	51	94.74%	93.00%
	Gotsch Intermediate	17	93.18%	94.12%
	Mesnier Primary	34	95.62%	91.71%
	<i>Middle</i>	37	94.39%	91.65%
	Rogers Middle	37	94.39%	91.65%
	<i>Sr. High</i>	52	90.56%	90.77%
	Affton High School	52	90.56%	90.77%
<b>BAY</b>				
	<i>Elementary</i>	57	96.08%	94.93%
	Bayless Elementary	22	95.43%	95.83%
	Bayless Intermediate	35	96.48%	94.28%
	<i>Middle</i>	40	95.17%	94.63%
	Bayless Intermediate	13	91.67%	92.68%
	Bayless Jr. High	27	96.95%	95.32%
	<i>Sr. High</i>	28	94.47%	93.99%
	Bayless High School	28	94.47%	93.99%
<b>BRE</b>				
	<i>Elementary</i>	51	95.99%	95.44%
	Mark Twain Elementary	24	96.39%	95.50%
	McGrath Elementary	27	95.64%	95.39%
	<i>Middle</i>	40	95.44%	93.98%
	Brentwood Middle School	40	95.44%	93.98%
	<i>Sr. High</i>	46	92.60%	93.56%
	Brentwood High School	46	92.60%	93.56%
<b>CLA</b>				
	<i>Elementary</i>	205	95.85%	95.62%
	Captain Elementary	64	95.44%	95.44%
	Glenridge Elementary	70	94.75%	96.02%
	Meramec Elementary	71	97.29%	95.53%
	<i>Middle</i>	117	94.97%	95.93%
	Wydown Middle	117	94.97%	95.97%
	<i>Sr. High</i>	156	93.84%	91.42%
	Clayton High	156	93.84%	91.38%
<b>HAN</b>				
	<i>Elementary</i>	199	94.95%	94.47%
	Hancock Place Elementary	200	94.95%	94.47%

<i>Dist</i>	<i>School</i>	<i># of Students</i>	<i>Rate</i>	<i>06/07 Rate</i>
<b>HAN</b>				
	<i>Middle</i>	93	94.37%	94.83%
	Hancock Place Middle	93	94.37%	94.84%
	<i>Sr. High</i>	97	94.28%	92.83%
	Hancock Place Sr High	97	94.28%	92.83%
<b>KIR</b>				
	<i>Elementary</i>	186	94.84%	94.07%
	Keysor Elementary	49	94.47%	93.57%
	North Glendale Elementary	29	94.72%	94.71%
	Robinson Elementary	15	94.62%	94.85%
	Tillman Elementary	51	95.27%	93.68%
	Westchester Elementary	42	94.93%	94.28%
	<i>Middle</i>	135	94.54%	93.32%
	Nipher Middle	51	93.46%	91.85%
	North Kirkwood Middle	84	95.17%	94.10%
	<i>Sr. High</i>	231	91.83%	89.97%
	Kirkwood Sr. High	231	91.83%	89.93%
<b>LAD</b>				
	<i>Sr. High</i>	20	89.30%	88.70%
	Horton Watkins High	20	89.30%	88.70%
<b>LIN</b>				
	<i>Elementary</i>	74	95.50%	96.23%
	Kennerly Elementary	8	94.90%	96.86%
	Long Elementary	12	95.98%	96.93%
	Sappington Elementary	30	96.66%	96.08%
	Truman Elementary	24	93.88%	94.50%
	<i>Middle</i>	124	93.41%	93.02%
	Sperreng Middle	124	93.41%	93.02%
	<i>Sr. High</i>	128	92.71%	93.68%
	Lindbergh Academy	9	90.50%	84.94%
	Lindbergh High School	119	92.89%	94.26%
<b>MEH</b>				
	<i>Elementary</i>	266	92.83%	94.26%
	Beasley Elementary	35	92.91%	93.27%
	Bierbaum Elementary	25	91.40%	93.45%
	Blades Elementary	28	93.27%	94.03%
	Forder Elementary	34	92.80%	93.30%
	Hagemann Elementary	29	91.39%	94.26%
	Oakville Elementary	24	94.18%	93.45%
	Point Elementary	25	92.77%	93.69%
	Rogers Elementary	19	94.35%	95.84%
	Trautwein Elementary	21	92.22%	94.18%
	Wohlwend Elementary	26	93.53%	93.53%
	<i>Middle</i>	232	91.72%	91.83%

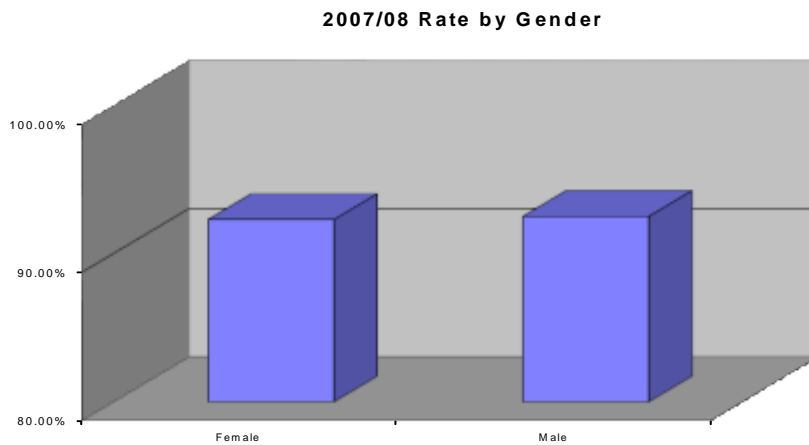
<i>Dist</i>	<i>School</i>	<i># of Students</i>	<i>Rate</i>	<i>06/07 Rate</i>
<b>MEH</b>				
	Bernard Middle	66	92.27%	92.78%
	Buerkle Middle	59	89.40%	88.82%
	Oakville Middle	57	93.44%	94.03%
	Washington Middle	50	91.91%	91.91%
	<i>Sr. High</i>	<i>419</i>	<i>90.35%</i>	<i>91.16%</i>
	Mehlville Sr High	214	90.08%	93.27%
	Oakville Sr High	205	90.62%	93.30%
<b>PAR</b>				
	<i>Elementary</i>	<i>618</i>	<i>92.97%</i>	<i>93.13%</i>
	Barretts Elementary	30	93.44%	93.44%
	Bellerive Elementary	30	95.10%	95.10%
	Carman Trails Elementary	29	93.94%	93.94%
	Claymont Elementary	39	90.62%	90.62%
	Craig Elementary	11	92.88%	92.88%
	Green Trails Elementary	49	92.65%	92.65%
	Hanna Woods Elementary	35	92.82%	92.82%
	Henry Elementary	38	93.55%	93.55%
	Highcroft Elementary	47	91.84%	91.84%
	Mason Ridge Elementary	37	93.37%	93.37%
	McKelvey Elementary	28	95.39%	95.39%
	Oak Brook Elementary	36	93.78%	93.78%
	Pierremont Elementary	40	93.39%	93.39%
	River Bend Elementary	27	94.09%	94.09%
	Ross Elementary	33	93.98%	93.98%
	Shenandoah Valley Elementary	32	91.58%	91.58%
	Sorrento Springs Elementary	34	91.11%	91.11%
	Wren Hollow Elementary	43	91.99%	93.35%
	<i>Middle</i>	<i>508</i>	<i>91.70%</i>	<i>91.68%</i>
	Central Middle	120	92.03%	92.03%
	Northeast Middle	88	93.57%	93.57%
	South Middle	85	91.30%	91.30%
	Southwest Middle	95	90.64%	90.64%
	West High	1	81.40%	
	West Middle	119	91.23%	91.23%
	<i>Sr. High</i>	<i>650</i>	<i>88.04%</i>	<i>87.40%</i>
	Central High	135	90.78%	90.78%
	Fern Ridge High	31	83.16%	83.16%
	North High	113	89.74%	89.74%
	South High	201	84.52%	84.52%
	West High	170	89.59%	89.54%
<b>PAT</b>				
	<i>Elementary</i>	<i>2</i>	<i>93.86%</i>	<i>93.20%</i>
	Bridgeway Elem	2	93.86%	90.04%
	<i>Middle</i>	<i>25</i>	<i>95.36%</i>	<i>92.19%</i>

<i>Dist</i>	<i>School</i>	<i># of Students</i>	<i>Rate</i>	<i>06/07 Rate</i>
<b>PAT</b>				
	Holman Middle	9	95.88%	91.37%
	Pattonville Heights Middle	11	95.31%	93.36%
	THE RE-ENTRY CENTER	1	99.51%	
	Traditional	4	93.14%	92.56%
	<i>Sr. High</i>	66	90.41%	92.13%
	Pattonville High	66	90.41%	92.25%
<b>ROC</b>				
	<i>Elementary</i>	779	93.59%	92.74%
	Babler Elementary	44	93.88%	93.77%
	Ballwin Elementary	54	92.51%	90.82%
	Blevins Elementary	37	93.89%	92.55%
	Bowles Elementary	35	94.34%	94.67%
	Chesterfield Elementary	49	92.39%	91.51%
	Ellisville Elementary	46	93.11%	93.04%
	Eureka Elementary	32	93.86%	91.53%
	Fairway Elementary	30	94.61%	92.17%
	Geggie Elementary	30	94.05%	90.81%
	Green Pines Elementary	49	94.69%	92.35%
	Kehrs Mill Elementary	48	92.66%	92.96%
	Kellison Elementary	38	93.67%	92.30%
	Pond Elementary	37	94.09%	94.65%
	Ridge Meadows Elementary	30	91.43%	90.45%
	Stanton Elementary	39	94.54%	94.41%
	Uthoff Valley Elementary	42	94.47%	94.07%
	Westridge Elementary	47	93.32%	93.22%
	Wild Horse Elementary	44	93.42%	93.14%
	Woerther Elementary	48	93.92%	92.98%
	<i>Middle</i>	526	92.03%	91.73%
	Crestview Middle	118	91.74%	91.38%
	Kellison Elementary	1	100.00%	
	Lasalle Springs Middle	87	91.95%	90.54%
	Marquette Senior	1	93.98%	
	Rockwood South Middle	111	92.65%	91.48%
	Rockwood Summit Senior	1	85.45%	
	Rockwood Valley Middle	65	91.67%	92.72%
	Selvidge Middle	63	93.05%	92.12%
	Wildwood Middle	79	91.18%	90.43%
	<i>Sr. High</i>	765	90.73%	90.47%
	Eureka Senior	148	91.70%	90.82%
	ILC	46	85.22%	87.27%
	Lafayette Senior	249	90.83%	90.80%
	Lasalle Springs Middle	3	75.47%	
	Marquette Senior	164	92.09%	91.11%
	Rockwood South Middle	1	98.15%	
	Rockwood Summit Senior	154	89.62%	90.64%

<i>Dist</i>	<i>School</i>	<i># of Students</i>	<i>Rate</i>	<i>06/07 Rate</i>
<b>VAL</b>				
	<i>Elementary</i>	93	94.25%	93.99%
	Valley Park Elementary	93	94.25%	93.99%
	<i>Middle</i>	54	93.14%	92.74%
	Valley Park Middle	54	93.14%	92.78%
	<i>Sr. High</i>	53	86.68%	93.28%
	Valley Park Sr High	53	86.68%	93.23%
<b>WEB</b>				
	<i>Elementary</i>	106	93.95%	92.20%
	Avery Elementary	23	91.44%	91.04%
	Bristol Elementary	24	94.02%	91.39%
	Bristol Primary	2	92.75%	92.59%
	Clark Elementary	17	96.75%	94.25%
	Computer School	9	95.18%	95.29%
	Edgar Road Elementary	17	92.86%	93.22%
	Hudson Elementary	14	95.07%	91.22%
	<i>Middle</i>	80	92.75%	91.90%
	Hixson Middle	54	91.68%	91.85%
	Steger Sixth Grade Center	26	95.02%	92.01%
	<i>Sr. High</i>	136	91.86%	90.63%
	Webster Groves High	136	91.86%	90.63%

**VICC**  
**2007/08 Attendance Analysis**  
**Report #7**  
**Total Rate by Gender**

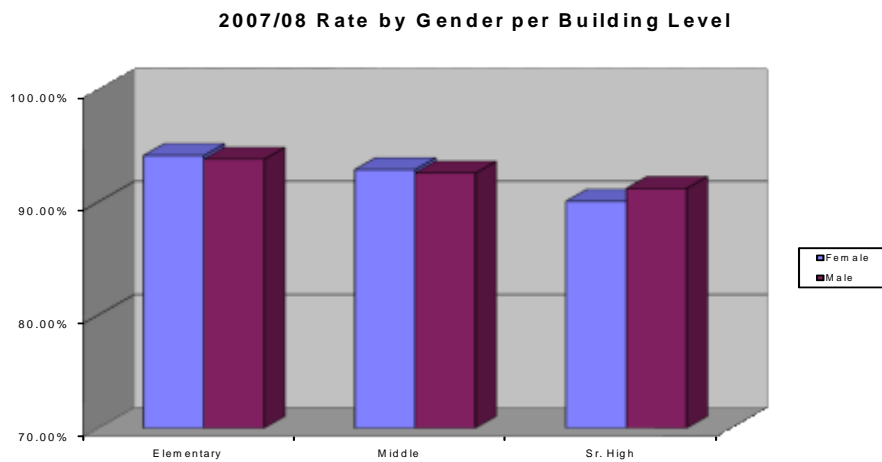
<i>Gender</i>	<i># of Students</i>	<i>Rate</i>	<i>06/07 Rate</i>
F	4052	92.28%	92.04%
M	3494	92.49%	92.15%





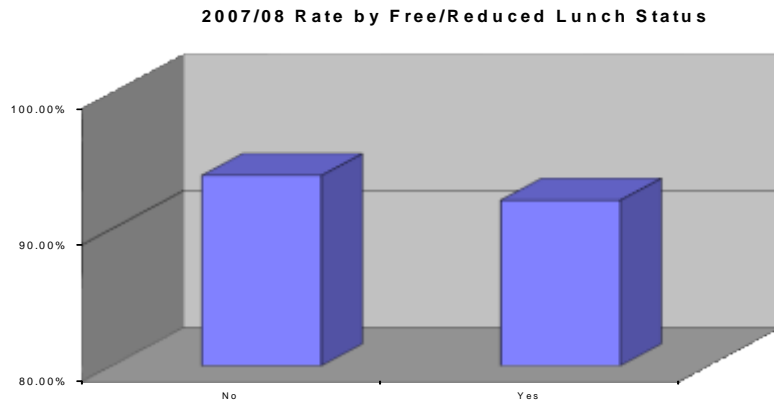
**VICC**  
**2007/08 Attendance Analysis**  
**Report #8**  
**Rate by Gender per Building Level**

<i>Building Level</i>	<i>Gender</i>	<i># of Students</i>	<i>Rate</i>	<i>06/07 Rate</i>
<i>Elementary</i>				
	M	1257	93.77%	93.57%
	F	1431	94.10%	93.75%
<i>Middle</i>				
	M	906	92.55%	92.24%
	F	1105	92.86%	92.51%
<i>Sr. High</i>				
	M	1331	91.20%	90.74%
	F	1516	90.06%	89.84%



**VICC**  
**2007/08 Attendance Analysis**  
**Report #9**  
**Total Rate by Free/Reduced Lunch Status**

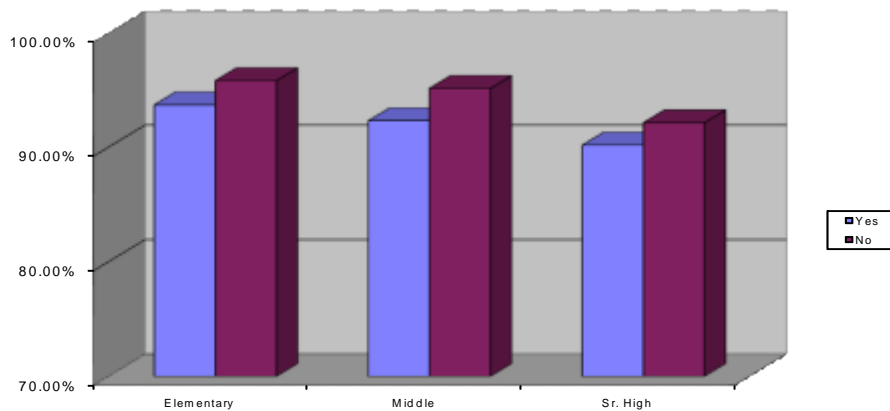
<i>FRLunch</i>	<i># of Students</i>	<i>Rate</i>	<i>06/07 Rate</i>
N	1224	93.89%	93.13%
Y	6322	92.09%	91.91%



**VICC**  
**2007/08 Attendance Analysis**  
**Report #10**  
**Rate by Free/Reduced Lunch Status**  
**per Building Level**

<i>Building Level</i>	<i>Free/Reduced Lunch (Y/N)</i>	<i># of Students</i>	<i>Rate</i>	<i>06/07 Rate</i>
<i>Elementary</i>	Y	2353	93.69%	93.40%
	N	335	95.81%	95.75%
<i>Middle</i>	Y	1718	92.30%	92.12%
	N	293	95.13%	94.34%
<i>Sr. High</i>	Y	2251	90.18%	90.06%
	N	596	92.14%	91.13%

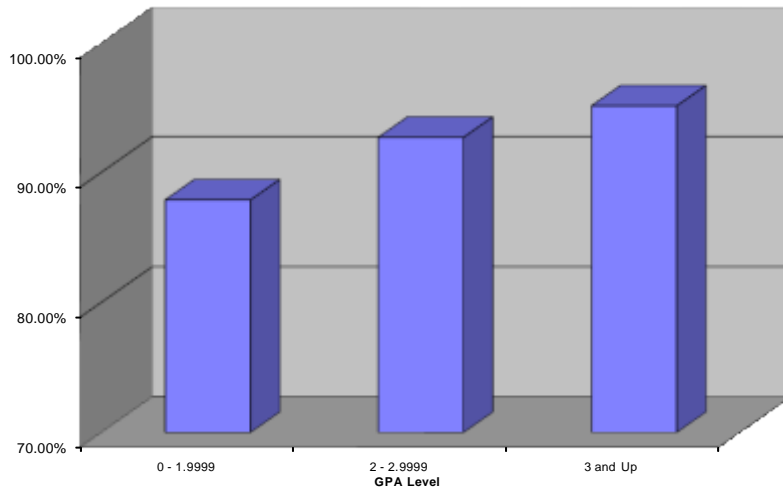
**2007/08 Rate by Free/Reduced Lunch Status per Building Level**



**VICC**  
**2007/08 Attendance Analysis**  
**Report #11**  
**Rate by GPA**

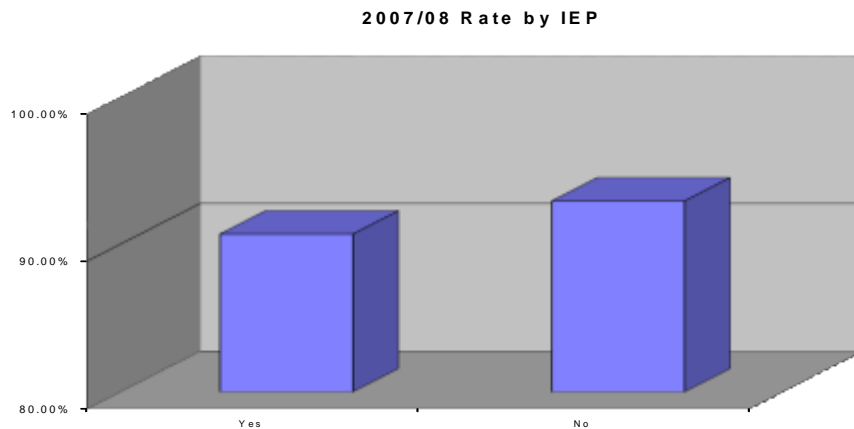
<i>GPA</i>	<i>E/M/H</i>	<i># of Students</i>	<i>Rate</i>	<i>06/07 Rate</i>
0-1.9999	Sr. High	1419	87.88%	87.31%
2-2.9999	Sr. High	1074	92.69%	92.81%
3 and Up	Sr. High	323	95.11%	95.03%

**2007/08 Rate by GPA**



**VICC**  
**2007/08 Attendance Analysis**  
**Report #12**  
**Total Rate by IEP**

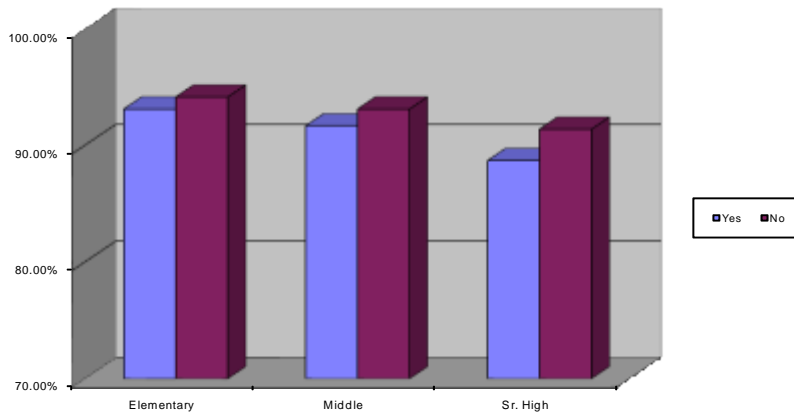
<i>IEP</i>	<i># of Students</i>	<i>Rate</i>	<i>06/07 Rate</i>
Y	1860	90.68%	90.36%
N	5664	92.92%	92.69%



**VICC**  
**2007/08 Attendance Analysis**  
**Report #13**  
**Rate by IEP per Building Level**

<i>Building Level</i>	<i>IEP</i>	<i># of Students</i>	<i>Rate</i>	<i>06/07 Rate</i>
<i>Elementary</i>				
	Y	469	93.10%	92.71%
	N	2219	94.13%	93.90%
<i>Middle</i>				
	Y	530	91.66%	91.17%
	N	1481	93.10%	92.85%
<i>Sr. High</i>				
	Y	861	88.68%	88.26%
	N	1964	91.37%	91.16%

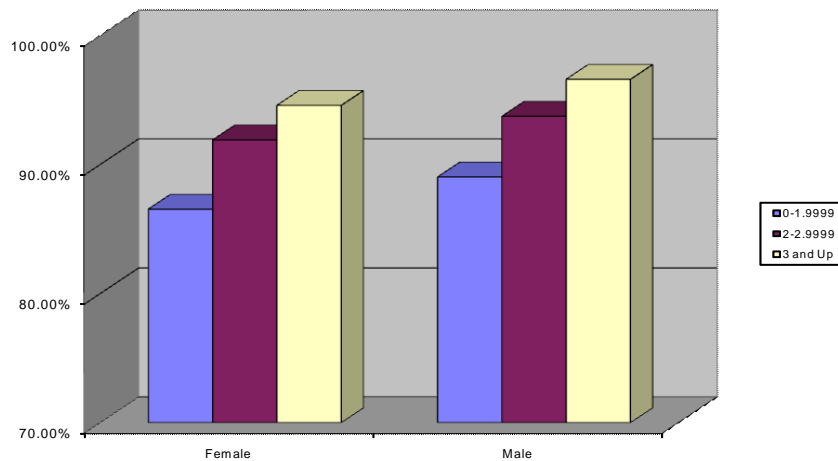
**2007/08 Rate by IEP per Building Level**



**VICC**  
**2007/08 Attendance Analysis**  
**Report #14**  
**Rate by GPA and Gender per Building Level**

<i>Building Level</i>	<i>GPA Level</i>	<i>Gender</i>	<i># of Students</i>	<i>Rate</i>	<i>06/07 Rate</i>
<b>Sr. High</b>	<i>0-1.9999</i>	M	767	89.03%	88.36%
		F	652	86.54%	85.89%
	<i>2-2.9999</i>	M	461	93.73%	93.89%
		F	613	91.90%	91.95%
	<i>3 and Up</i>	M	83	96.60%	95.88%
		F	240	94.58%	94.70%

**2007/08 Rate by GPA per Gender**



**VICC**  
**2007/08 Attendance Analysis**  
**Report #15**  
**Rate by Gender and IEP/FRLunch Status per GPA Level**

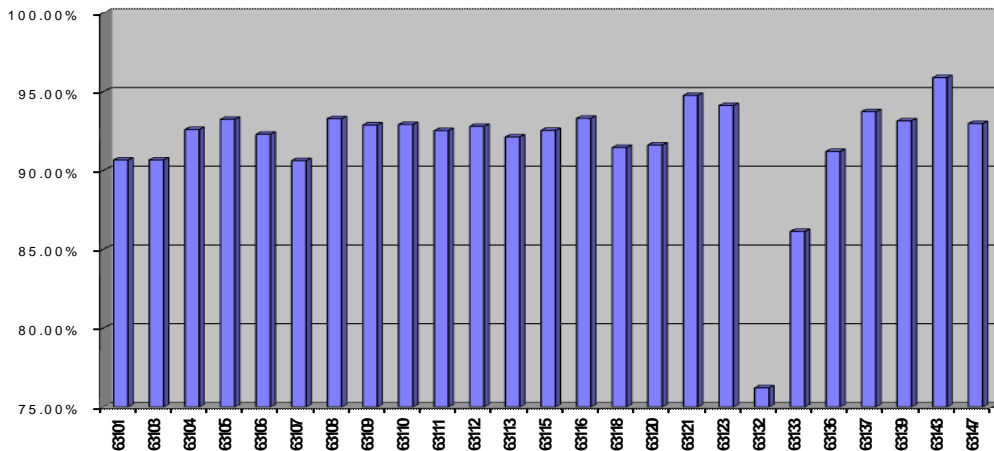
<i>GPA</i>	<i>IEP/FRLunch (Yes or No)</i>	<i>Gender</i>	<i># of Students</i>	<i>Rate</i>	
0-1.9999	<i>N</i>	M	509	90.36%	
		F	540	87.42%	
	<i>Y</i>	M	258	86.48%	
		F	112	82.39%	
	2-2.9999	<i>N</i>	M	305	94.80%
			F	486	92.14%
<i>Y</i>		M	156	91.56%	
		F	127	90.96%	
3 and Up		<i>N</i>	M	70	96.89%
			F	204	94.72%
	<i>Y</i>	M	13	95.01%	
		F	36	93.76%	



**VICC**  
**2007/08 Attendance Analysis**  
**Report #16**  
**Total Rate by Zip**

<i>Zip</i>	<i># of Students</i>	<i>Rate</i>	<i>06/07 Rate</i>
63101	9	90.67%	
63103	30	90.67%	94.61%
63104	473	92.60%	92.47%
63105	5	93.25%	
63106	391	92.30%	92.15%
63107	381	91.63%	91.74%
63108	167	93.29%	92.51%
63109	59	92.89%	93.95%
63110	459	92.92%	92.54%
63111	583	92.53%	92.44%
63112	716	92.80%	92.73%
63113	499	92.13%	91.87%
63115	762	92.55%	92.08%
63116	618	93.31%	92.26%
63118	997	91.46%	91.39%
63120	435	91.62%	91.54%
63121	7	94.77%	89.67%
63123	5	94.12%	
63132	7	76.21%	
63133	5	86.13%	80.59%
63136	210	91.21%	91.56%
63137	45	93.73%	93.53%
63139	66	93.15%	92.82%
63143	11	95.90%	96.59%
63147	570	92.98%	92.12%

**2007/08 Rate by Zip**



**VICC**  
**2007/08 Attendance Analysis**  
**Report #17**  
**Total Rate by Zip per Area**

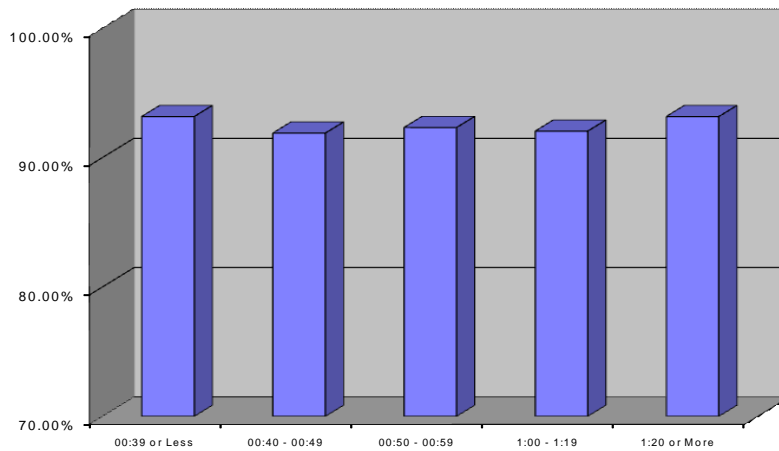
<i>Area</i>	<i>Zip</i>	<i># of Students</i>	<i>Rate</i>	<i>06/07 Rate</i>
<i>1</i>	63103	1	81.60%	
	63105	3	93.47%	97.25%
	63106	4	84.90%	
	63107	1	76.67%	
	63108	1	98.27%	
	63110	4	92.35%	
	63111	1	64.94%	
	63112	701	92.94%	92.73%
	63113	8	92.01%	91.36%
	63115	139	93.70%	92.59%
	63116	6	95.66%	
	63120	425	91.67%	91.54%
	63121	1	99.43%	89.53%
	63128	1	92.22%	
	63130	2	97.13%	97.91%
	63133	2	88.86%	94.29%
	63136	190	91.79%	91.60%
	63137	45	93.73%	93.53%
	63147	558	93.04%	92.11%
<i>2</i>	63101	5	87.92%	89.59%
	63102	4	94.01%	91.79%
	63103	26	92.21%	94.45%
	63104	2	90.29%	
	63106	381	92.33%	92.15%
	63107	377	91.62%	91.74%
	63108	163	93.19%	92.51%
	63110	5	94.38%	
	63111	2	82.29%	
	63112	14	85.88%	
	63113	484	92.15%	91.88%
	63115	622	92.29%	91.99%
	63116	4	94.90%	
	63118	7	94.23%	
	63120	7	88.34%	
	63121	4	93.76%	
	63126	1	75.27%	
	63133	1	98.28%	
	63134	1	83.24%	
	63135	1	91.62%	
	63136	4	91.91%	
	63147	6	87.99%	94.86%
<i>3</i>	63101	4	94.43%	
	63103	2	94.62%	98.85%
	63104	471	92.61%	92.47%
	63105	2	92.94%	
	63106	4	96.22%	
	63107	3	94.28%	
	63108	3	96.87%	
	63109	10	93.14%	94.67%
	63110	445	92.90%	92.52%
	63111	576	92.63%	92.44%

<i>Area</i>	<i>Zip</i>	<i># of Students</i>	<i>Rate</i>	<i>06/07 Rate</i>
3	63112	1	94.83%	
	63113	5	86.09%	88.92%
	63115	1	96.32%	
	63116	608	93.28%	92.26%
	63118	990	91.44%	91.39%
	63119	4	94.78%	
	63120	2	89.71%	
	63123	4	95.55%	97.40%
	63125	3	99.43%	
	63129	1	90.48%	
	63130	1	99.14%	
	63132	7	76.21%	
	63133	2	77.21%	85.15%
	63136	6	73.52%	
	63139	6	82.70%	96.96%
	63143	3	94.23%	
	63147	3	93.39%	
4	63109	49	92.84%	93.89%
	63110	4	94.21%	93.86%
	63111	1	92.00%	
	63117	1	98.53%	99.71%
	63119	1	98.04%	83.00%
	63129	2	92.78%	
	63136	2	93.76%	
	63139	60	94.22%	92.76%
	63143	8	96.62%	96.59%

**VICC**  
**2007/08 Attendance Analysis**  
**Report #18**  
**Rate by Ride Time**

<i>Ride Time</i>	<i># of Students</i>	<i>Rate</i>	<i>06/07 Rate</i>
<i>0:39 or Less</i>	1370	93.17%	92.48%
<i>0:40 - 0:49</i>	1655	91.89%	92.16%
<i>0:50 - 0:59</i>	1851	92.32%	91.76%
<i>1:00 - 1:19</i>	2214	92.04%	91.86%
<i>1:20 or More</i>	162	93.17%	91.77%

**2007/08 Rate by Ride Time**



**VICC**  
**2007/08 Attendance Analysis**  
**Report #19**  
**VICC versus City School Attendance**

	<b>Enrollment*</b>	<b>F&amp;R%</b>	<b>Attendance %</b>	<b>VICC</b>
Elementary Magnet	3,347	65%	94%	
Elementary Non-Magnet	10,344	80%	90%	93.95%
Middle Magnet	2,081	69%	94%	
Middle Non-Magnet	2,539	83%	88%	92.72%
High Magnet	3,251	55%	87%	
High Non-Magnet	5,312	57%	85%	90.59%

\*Enrollment figures are for SLPS schools only and exclude charter schools.

**VICC**  
**2007/08 Attendance Analysis**  
**Report #20**  
**Attendance Rate by Bus Contractor**

<u>Laidlaw Districts</u>	<u>07/08 Rate</u>	<u>06/07 Rate</u>
Ladue	89.30%	88.90%
Parkway	90.87%	90.82%
Pattonville	91.80%	92.26%
<b>Laidlaw Average</b>	<b>90.90%</b>	<b>90.87%</b>

<u>Atlantic Districts</u>	<u>07/08 Rate</u>	<u>06/07 Rate</u>
Rockwood	92.16%	91.64%
<b>Atlantic Average</b>	<b>92.16%</b>	<b>91.64%</b>

<u>Durham Districts</u>	<u>07/08 Rate</u>	<u>06/07 Rate</u>
Affton	93.05%	91.71%
Bayless	95.42%	94.64%
Brentwood	94.73%	94.49%
Clayton	94.96%	94.24%
Hancock Place	94.65%	94.26%
Kirkwood	93.53%	92.21%
Lindbergh	93.63%	94.19%
Mehlville	91.42%	92.13%
Valley Park	92.04%	93.47%
Webster Groves	92.79%	91.53%
<b>Durham Average</b>	<b>93.26%</b>	<b>93.04%</b>

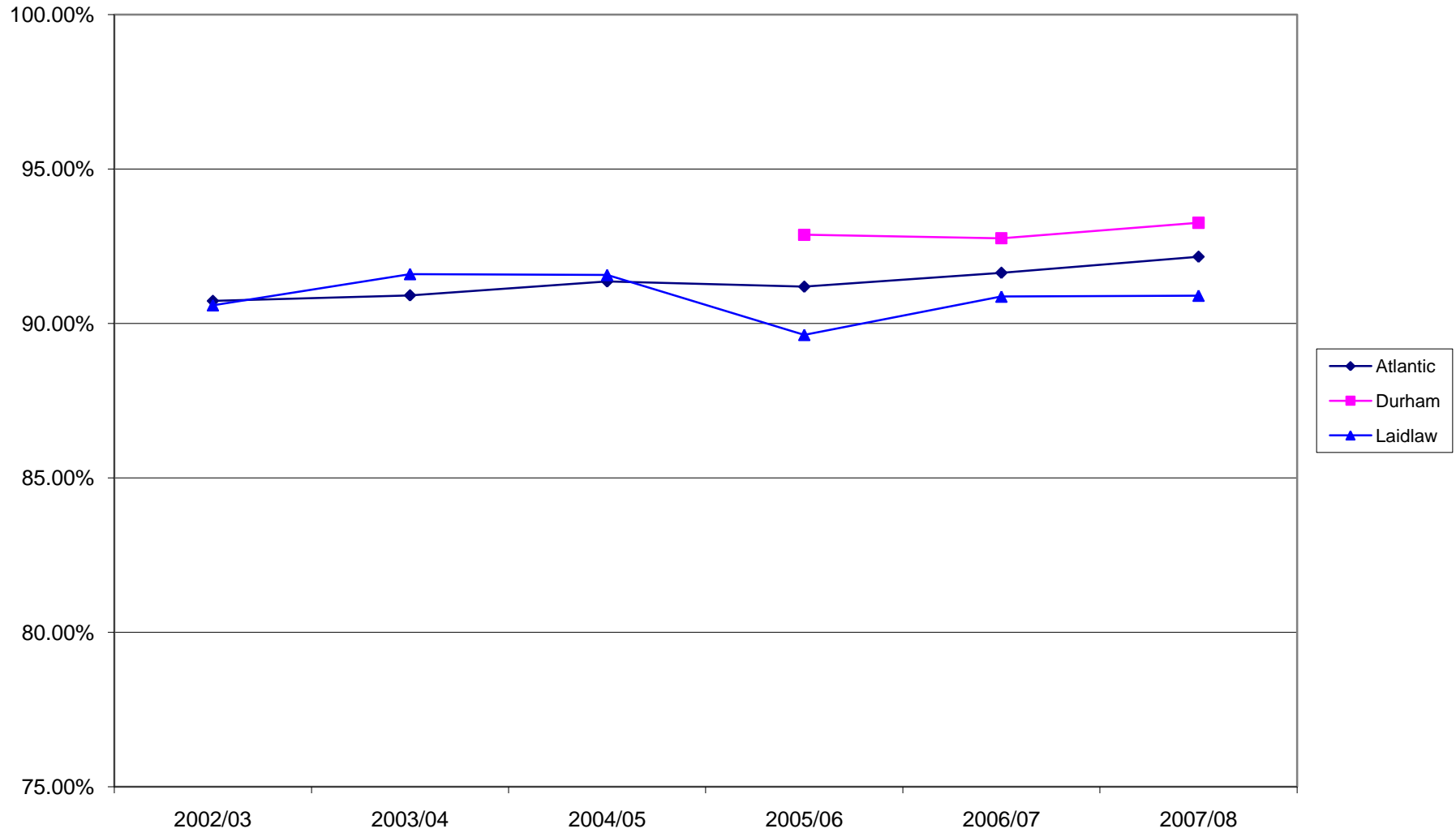
**VICC**  
**2007/08 Attendance Analysis**  
**Report #21**  
**Average Rate per District**

<i>District Level</i>	<i># of Students</i>	<i>Rate</i>	<i>06/07 Rate</i>
Affton	140	93.05%	91.71%
Bayless	125	95.42%	94.64%
Brentwood	137	94.73%	94.49%
Clayton	478	94.96%	94.24%
Hancock Place	390	94.65%	94.26%
Kirkwood	552	93.53%	92.21%
Ladue	20	89.30%	88.90%
Lindbergh	326	93.63%	94.19%
Mehlville	917	91.42%	92.13%
Parkway	1776	90.87%	90.82%
Pattonville	93	91.80%	92.26%
Rockwood	2070	92.16%	91.64%
Valley Park	200	92.04%	93.47%
Webster Groves	322	92.79%	91.53%

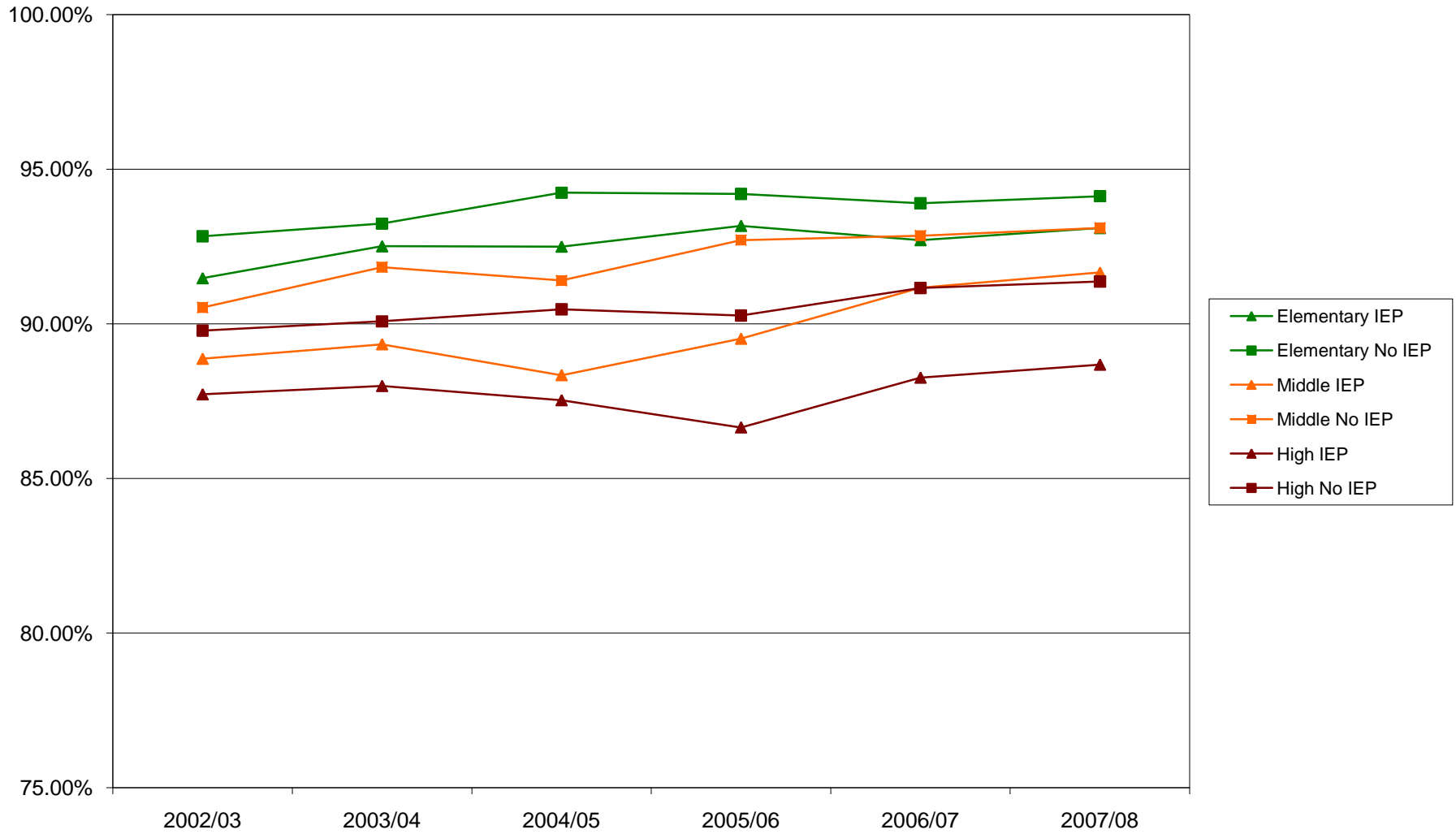




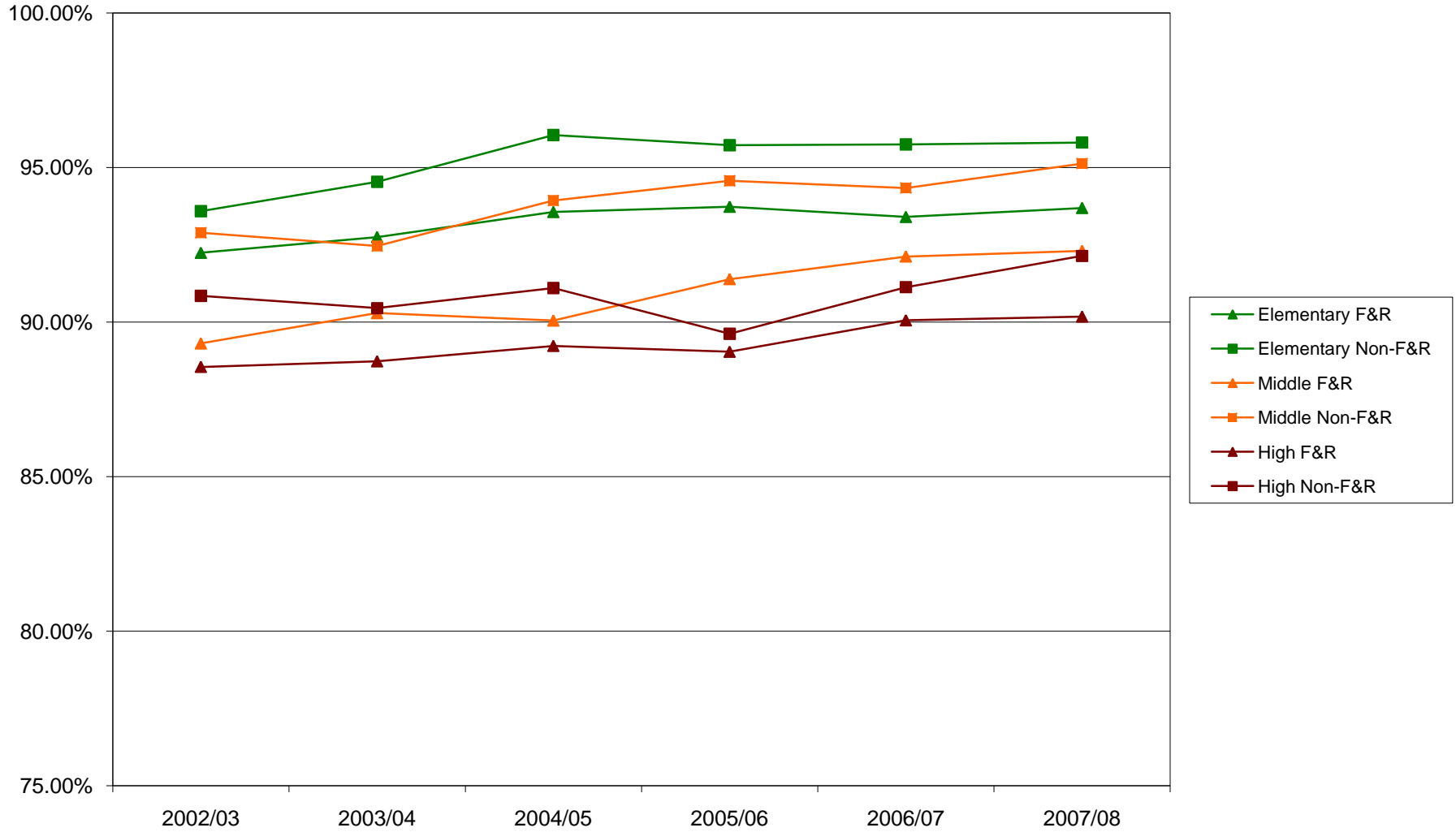
**Overall Attendance by Bus Contractor  
2002/03 through 2007/08**



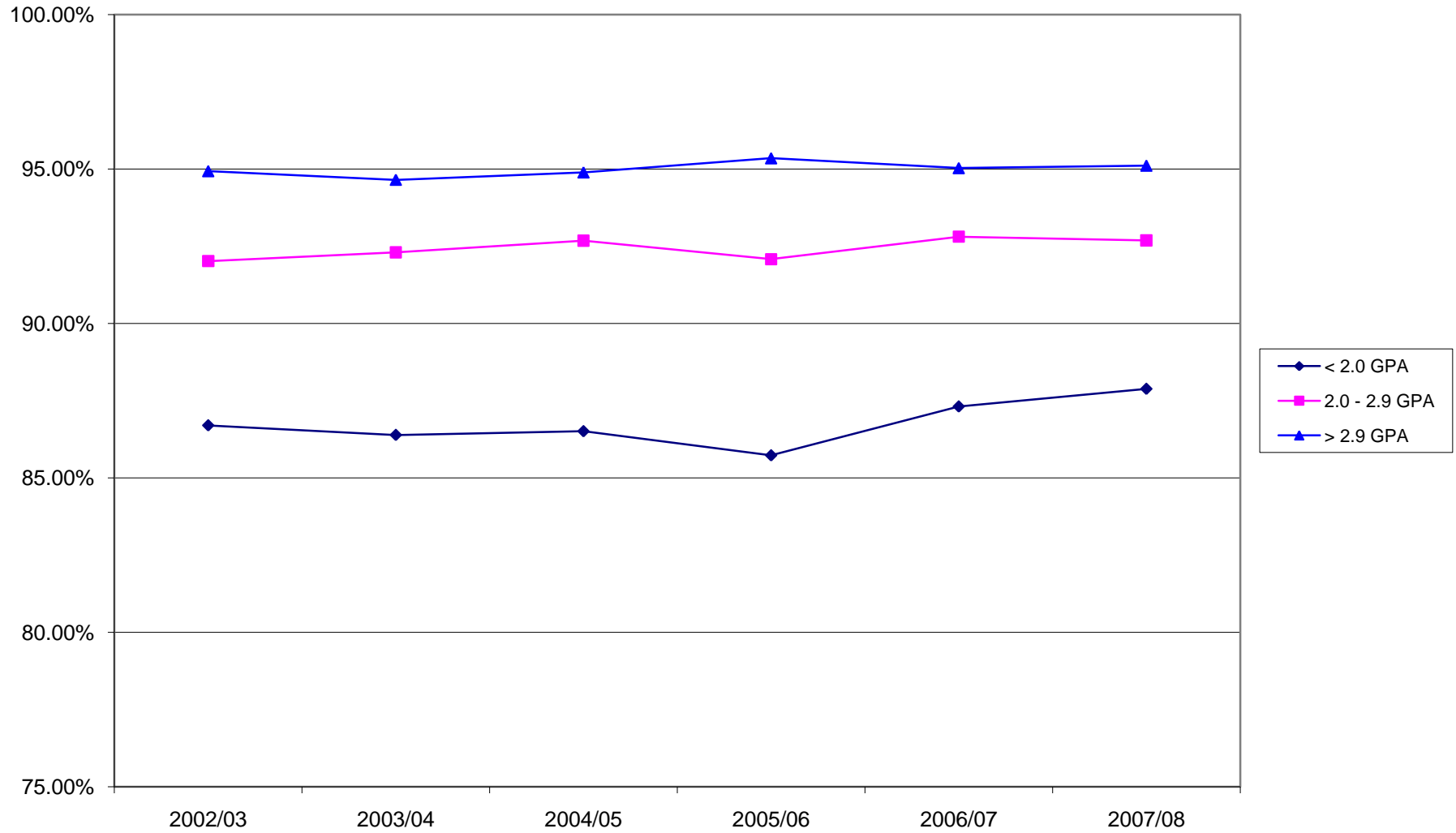
**Overall Attendance Rate IEP Status by Building Level  
2002/03 through 2007/08**



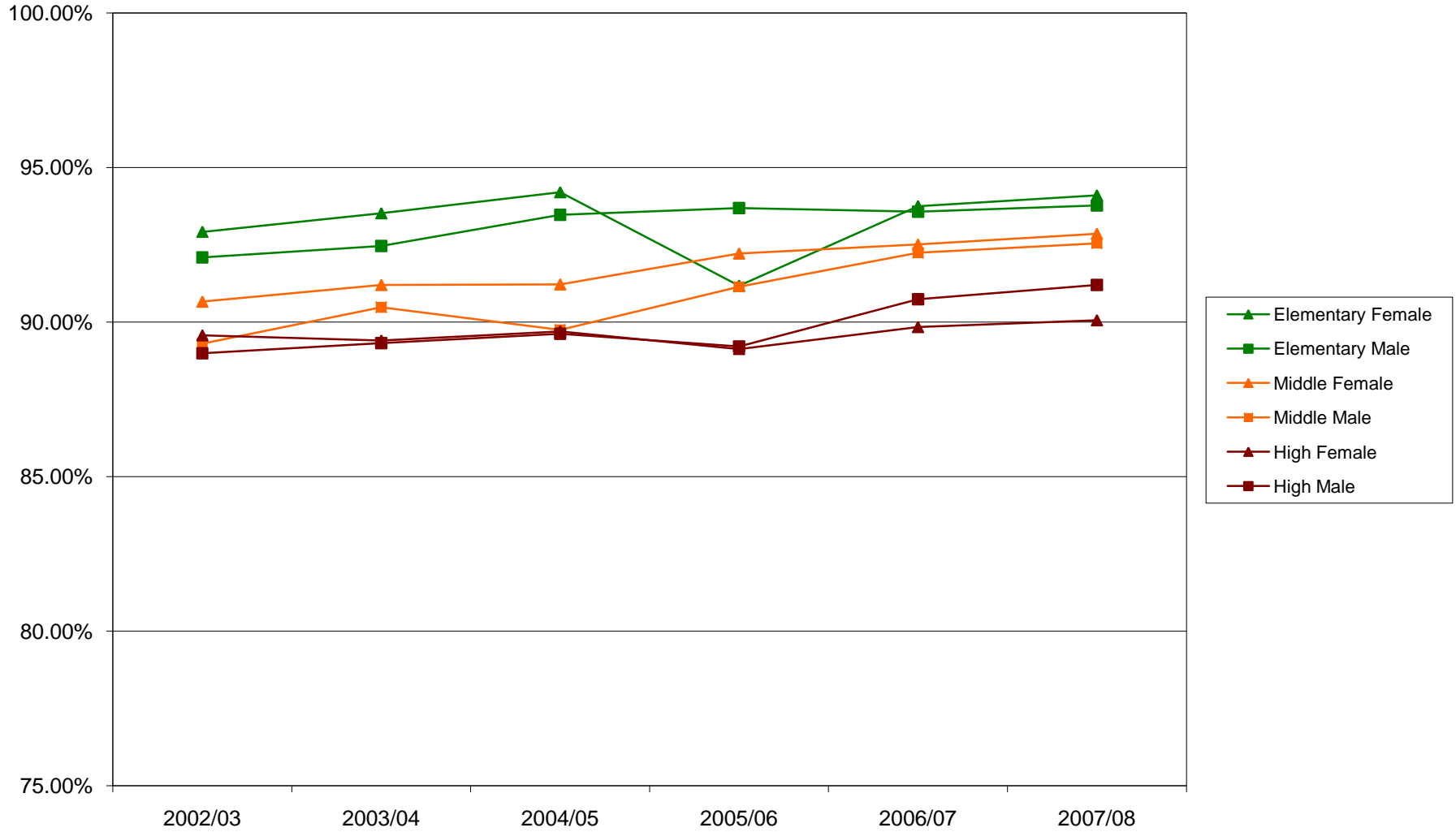
Overall Attendance Rate F&R Lunch Status by Building Level  
2002/03 through 2007/08



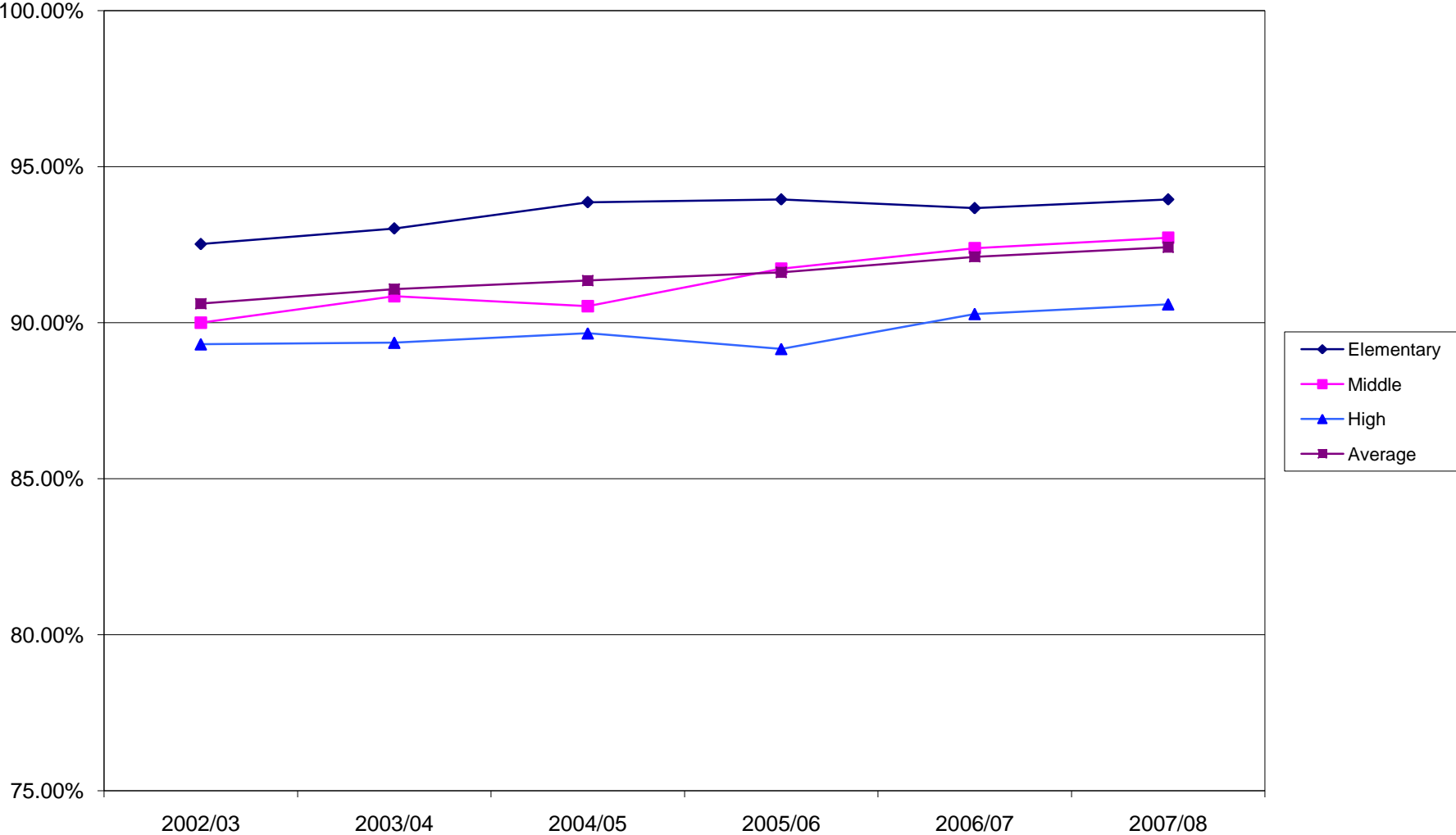
**Overall Attendance by GPA  
2002/03 through 2007/08**



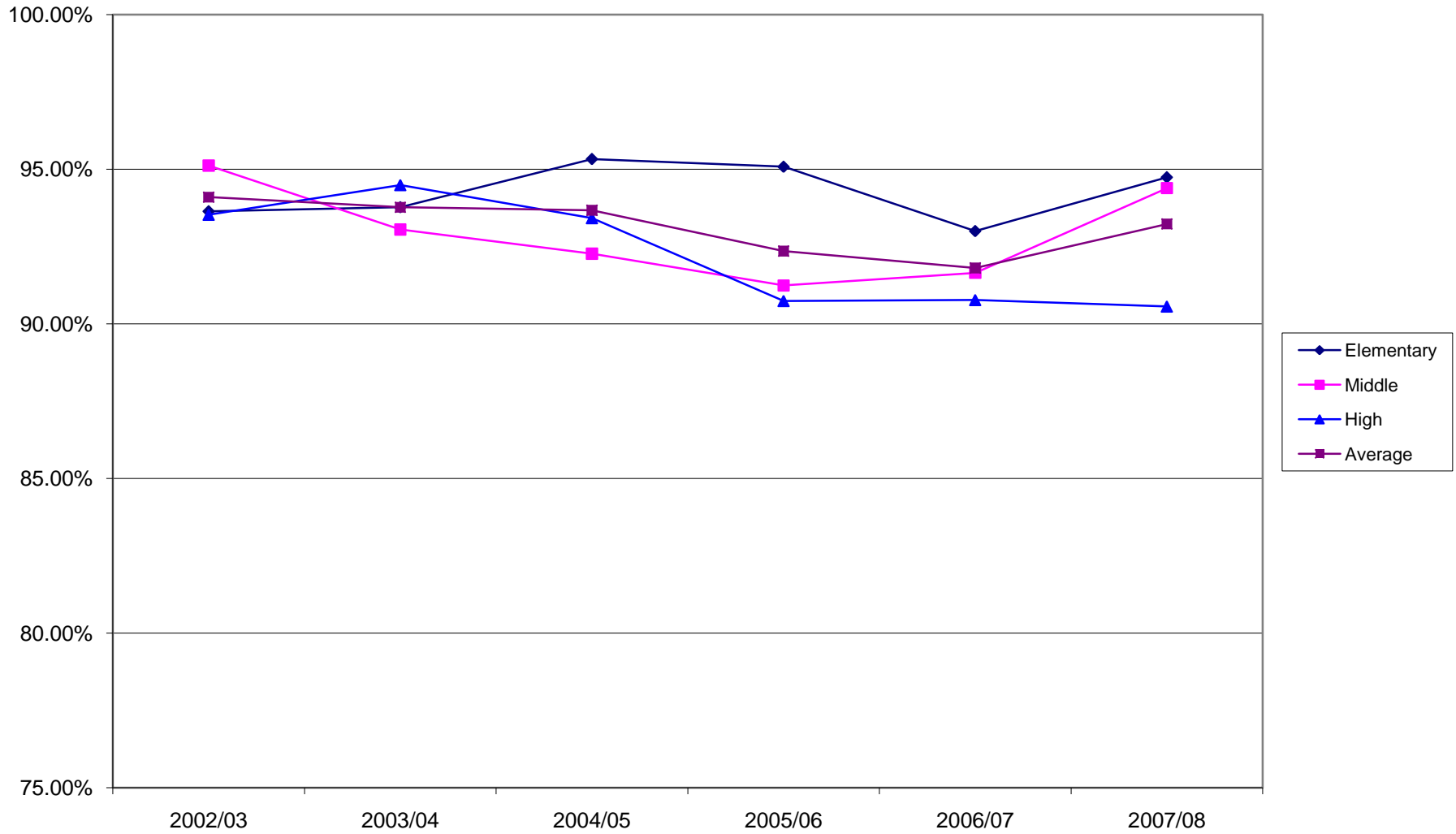
**Overall Attendance Rate Gender by Building Level  
2002/03 through 2007/08**



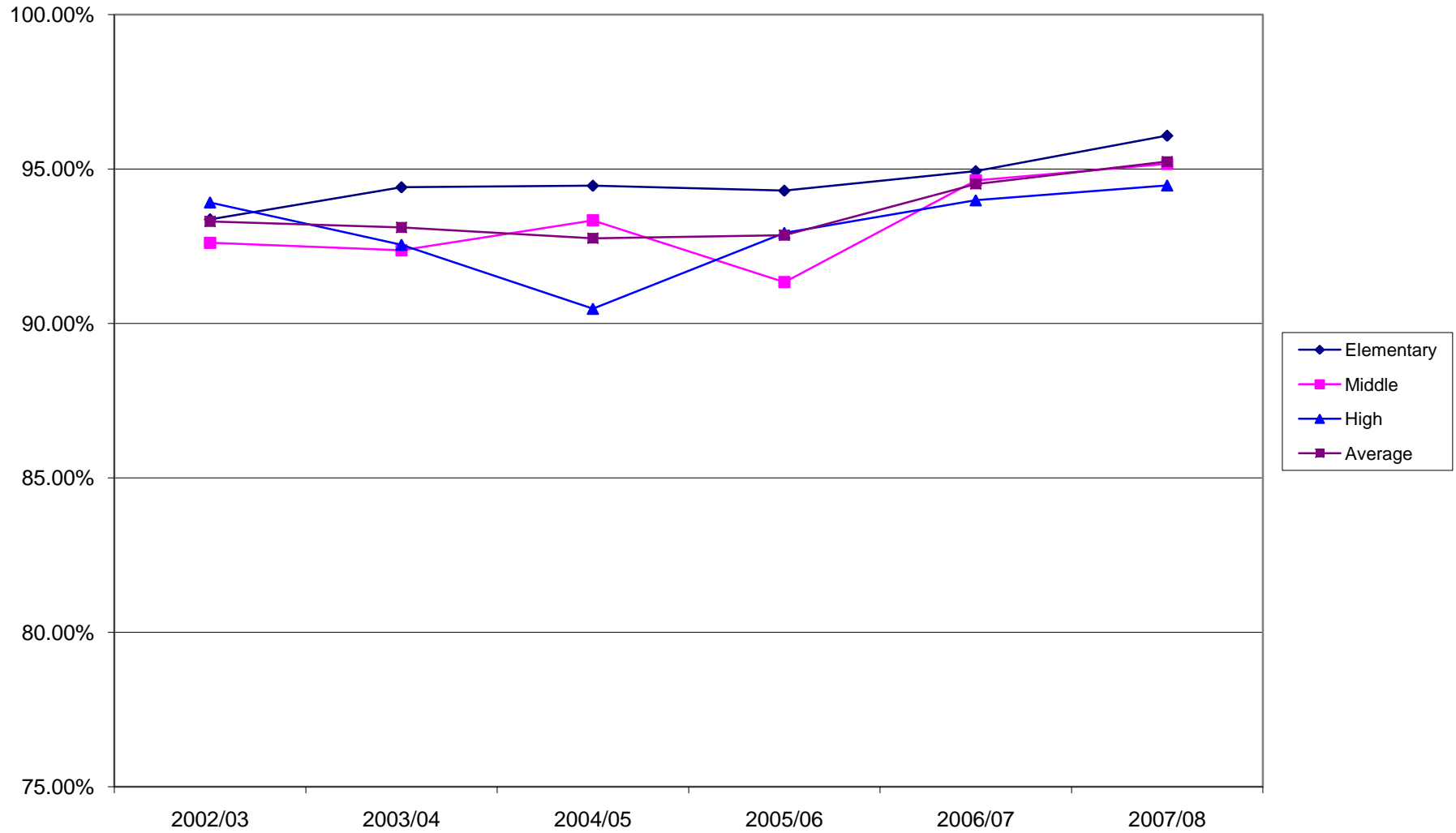
**Overall Attendance Rate by Building Level  
2002/03 through 2007/08**



**Affton Attendance Rate by Building Level  
2002/03 through 2007/08**

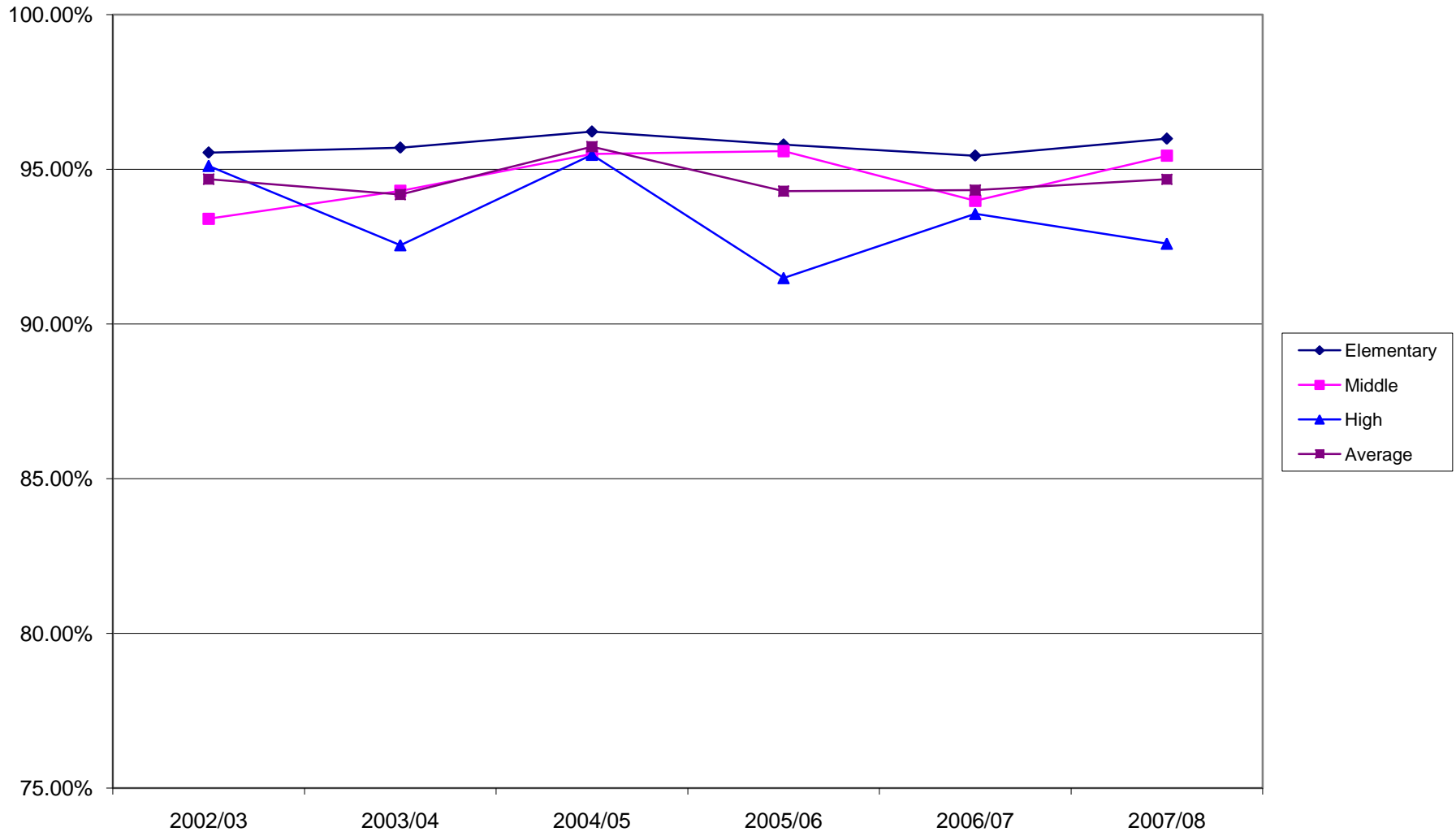


**Bayless Attendance Rate by Building Level  
2002/03 through 2007/08**

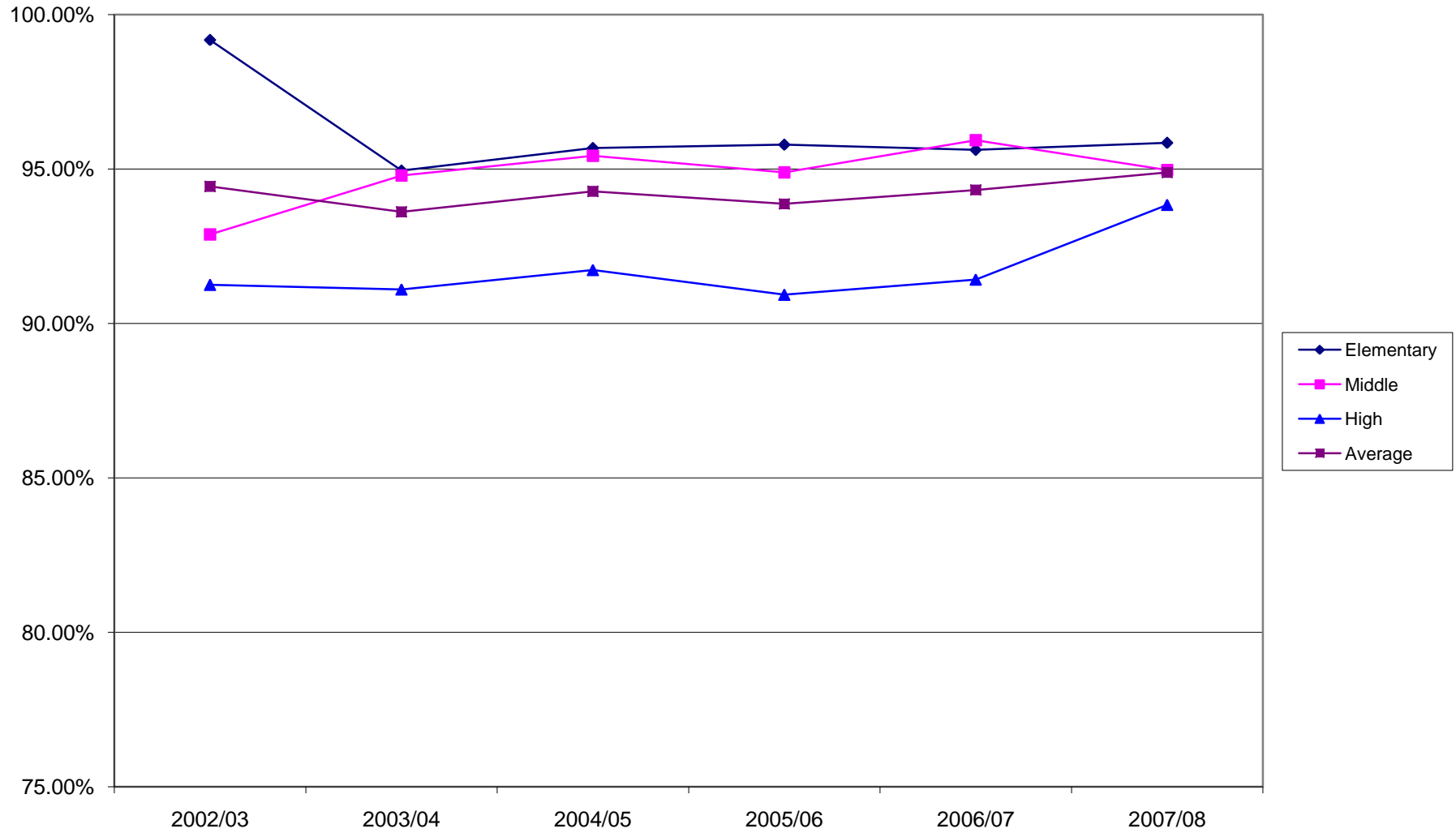




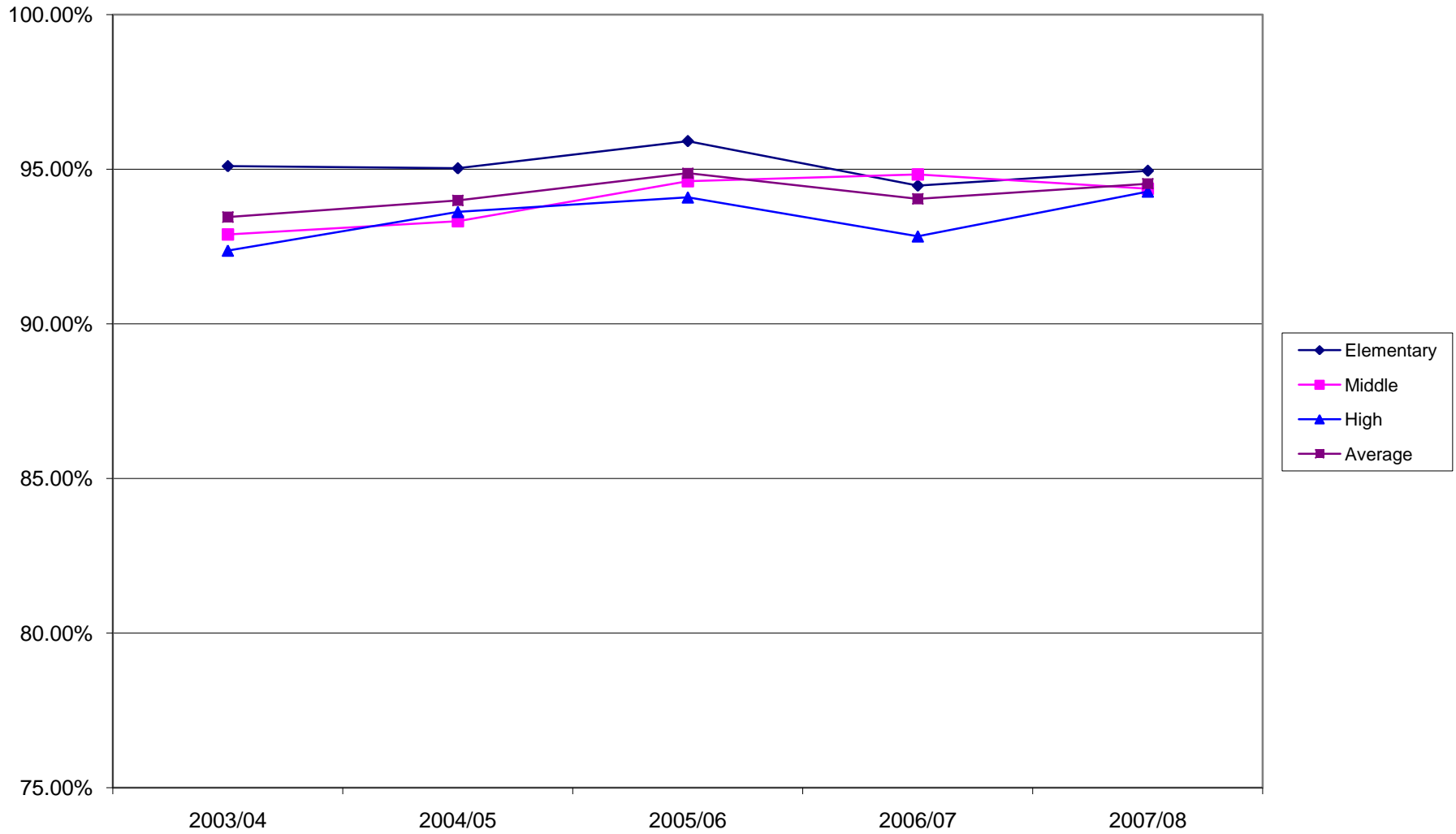
**Brentwood Attendance Rate by Building Level  
2002/03 through 2007/08**



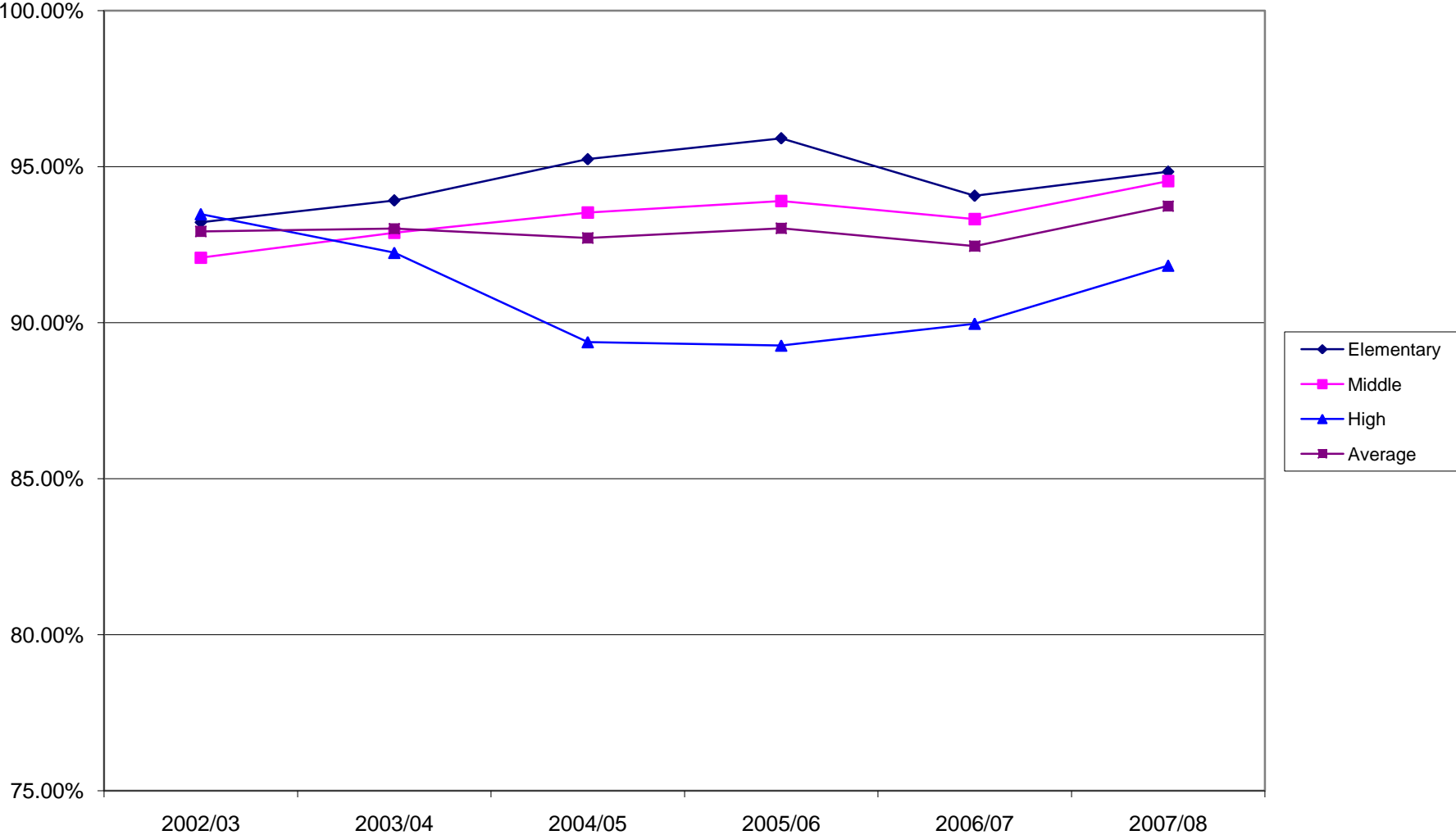
Clayton Attendance Rate by Building Level  
2002/03 through 2007/08



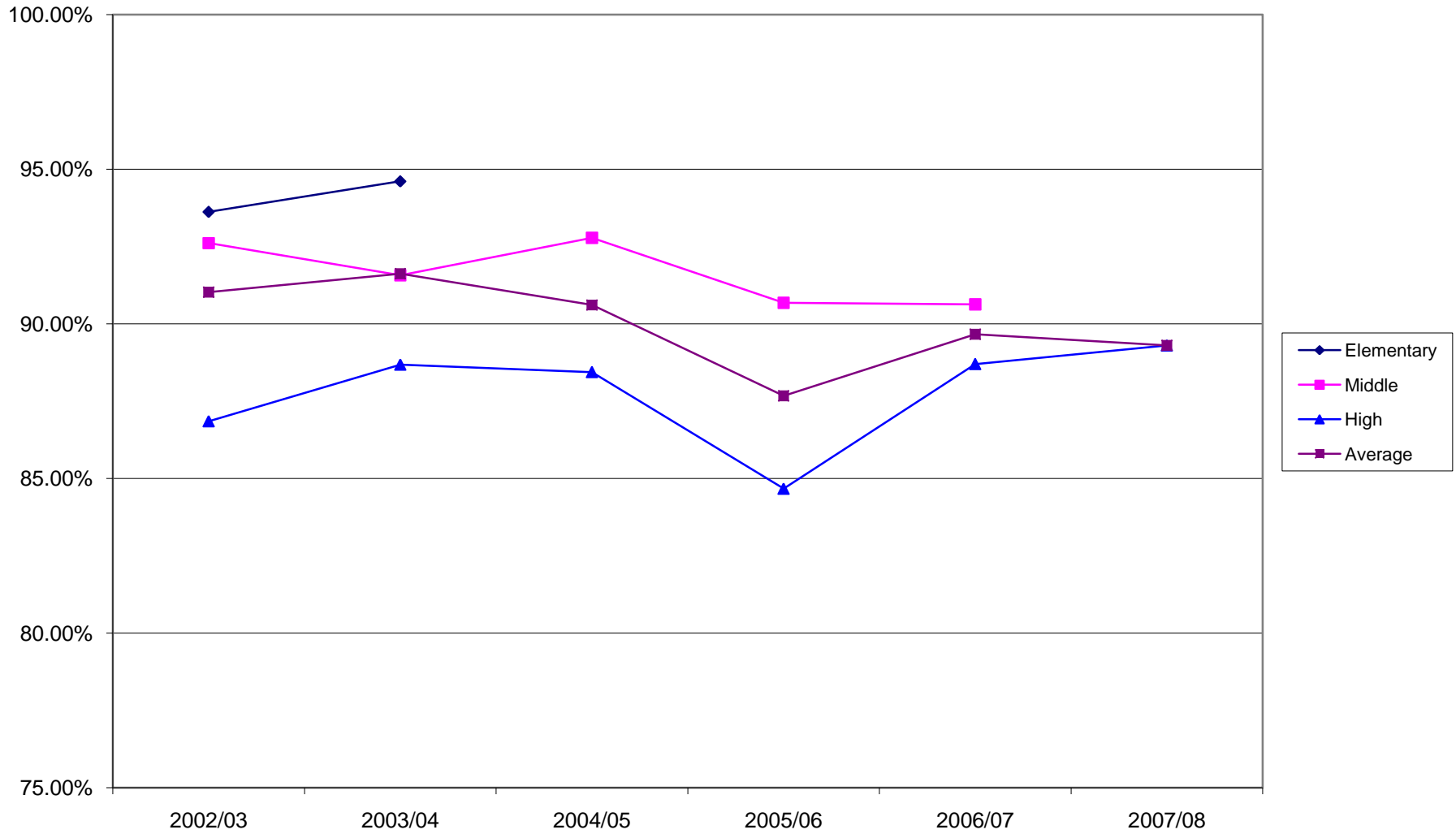
Hancock Place Attendance Rate by Building Level  
2003/04 through 2007/08



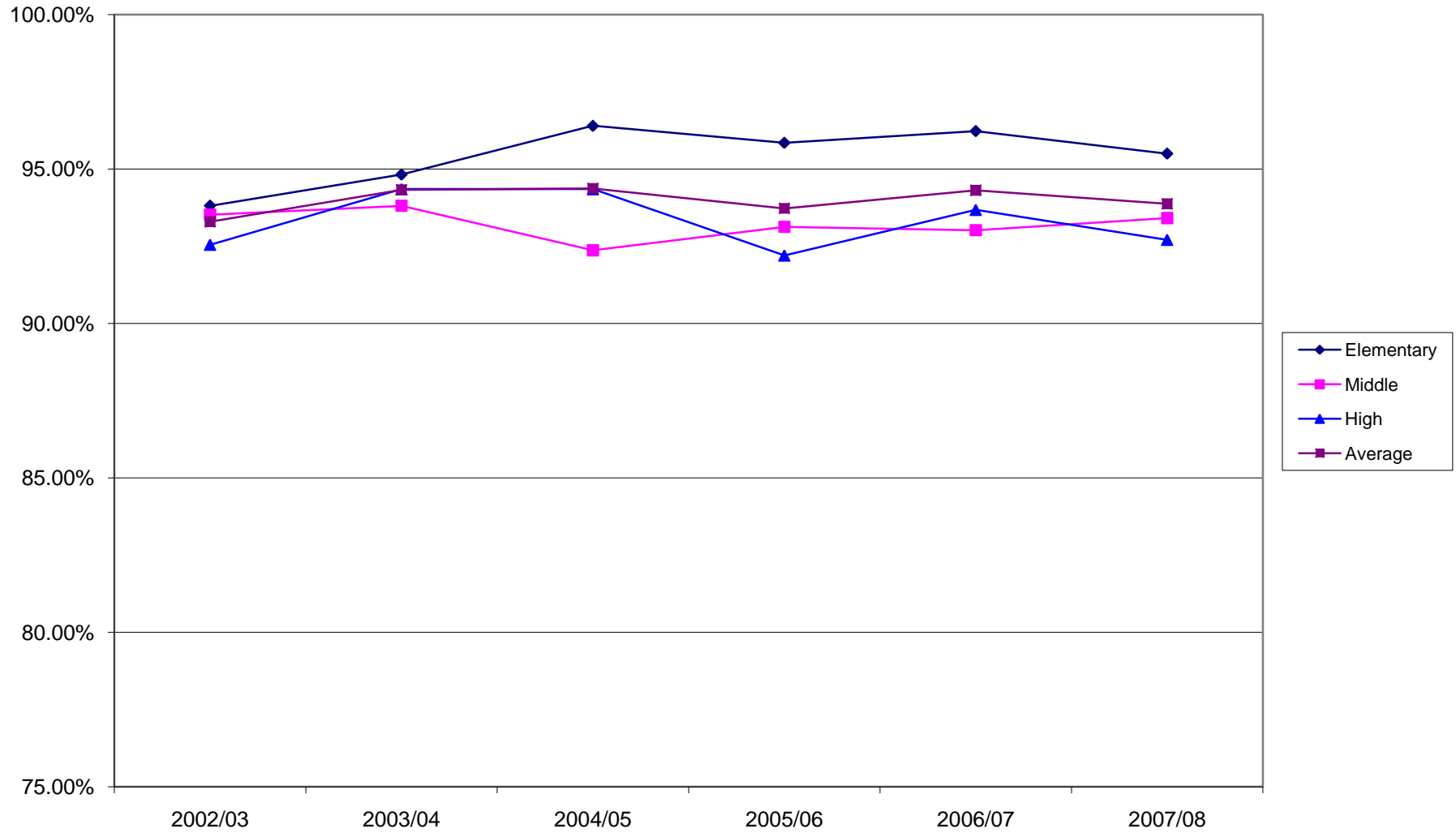
**Kirkwood Attendance Rate by Building Level  
2002/03 through 2007/08**



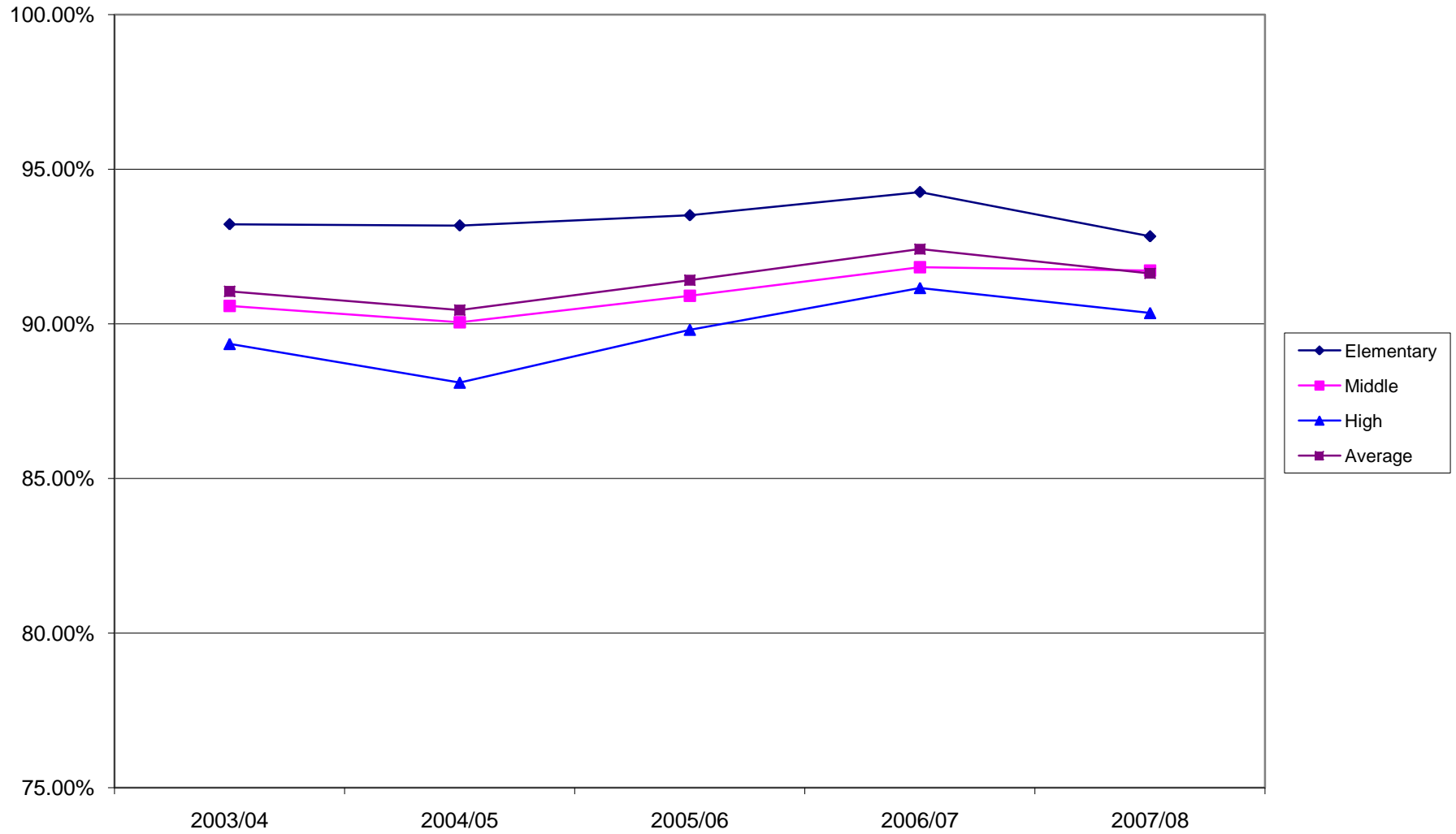
**Ladue Attendance Rate by Building Level  
2002/03 through 2007/08**



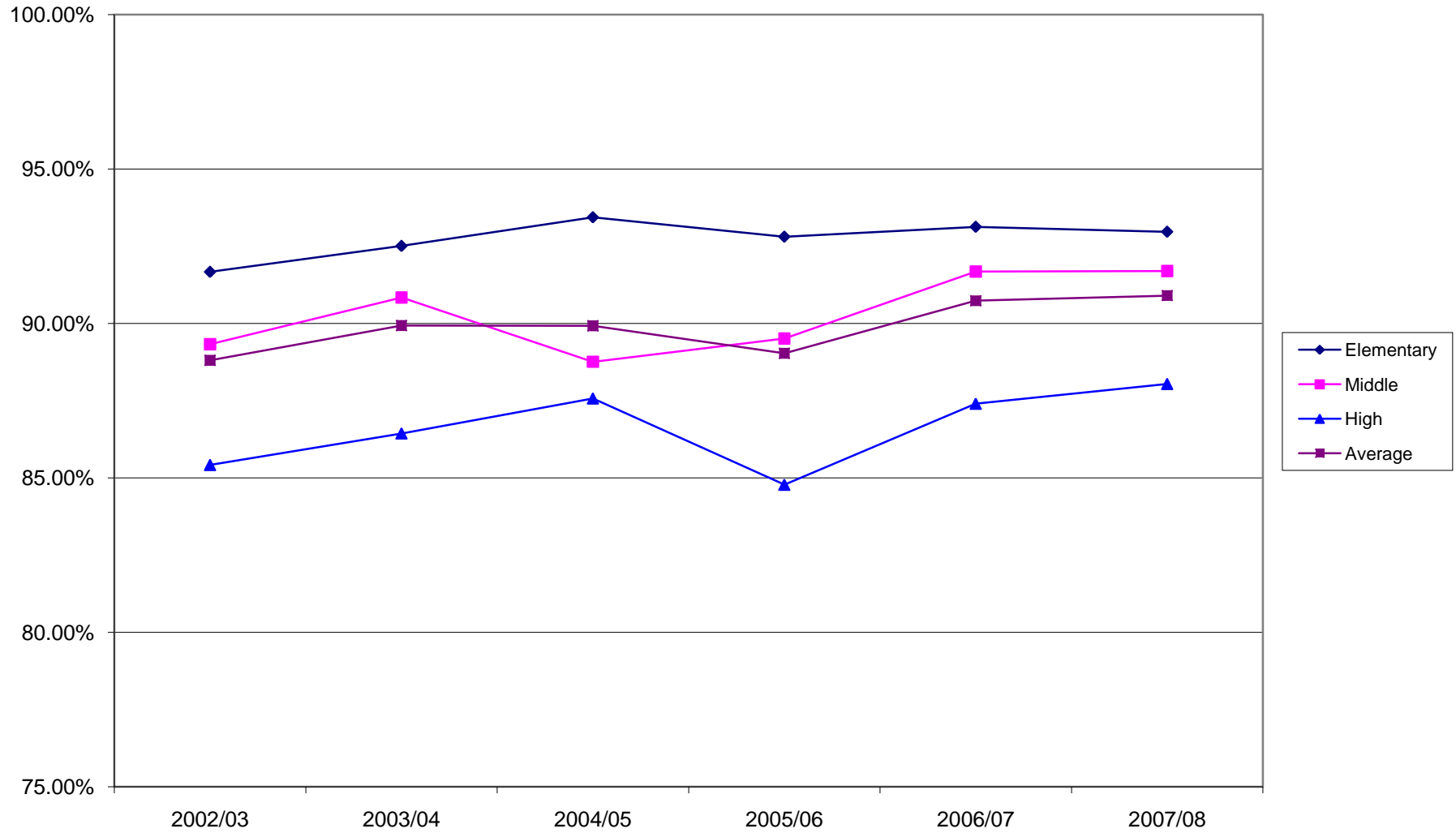
**Lindbergh Attendance Rate by Building Level  
2002/03 through 2007/08**



**Mehlville Attendance Rate by Building Level  
2003/04 through 2007/08**

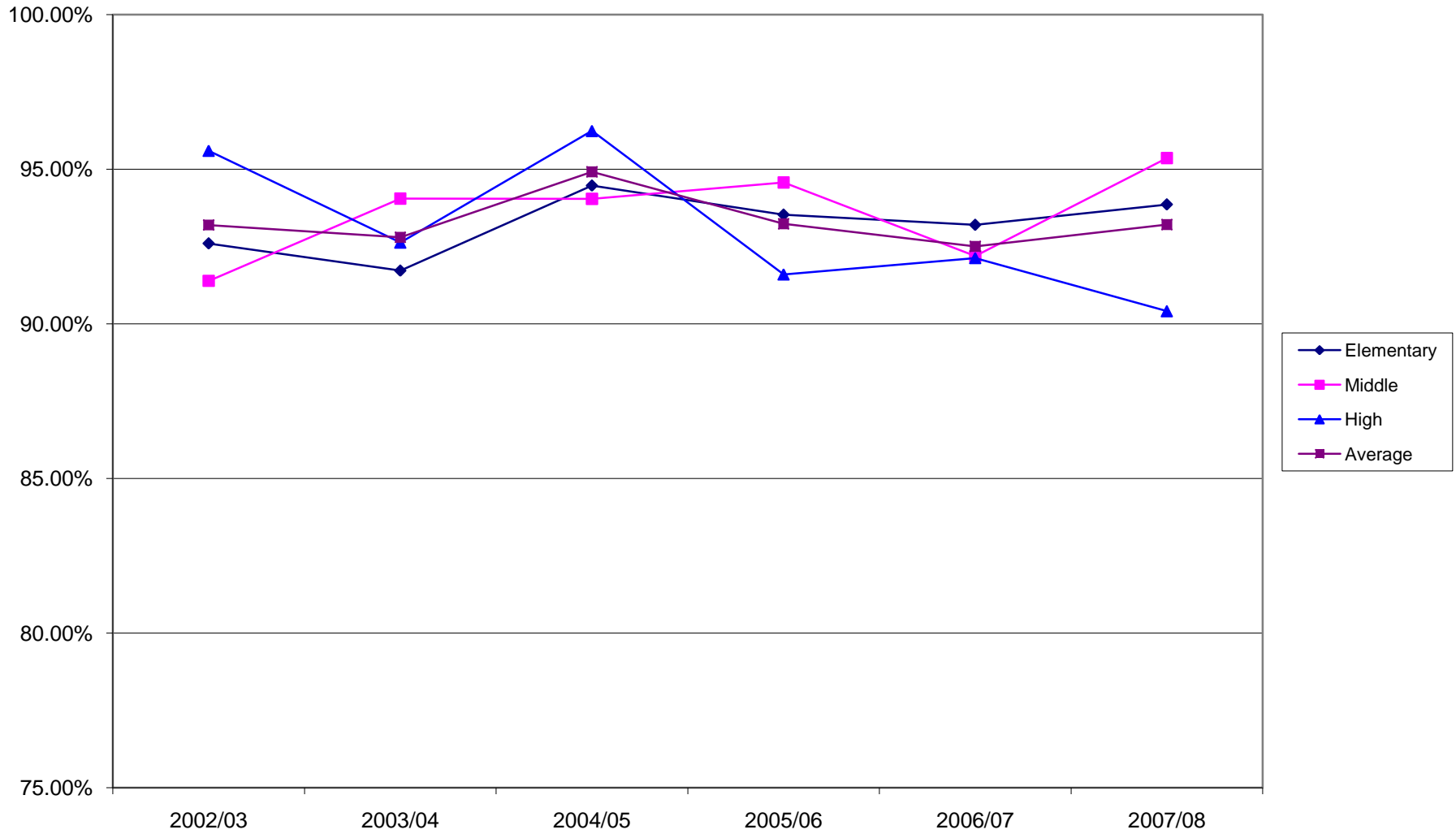


**Parkway Attendance Rate by Building Level  
2002/03 through 2007/08**

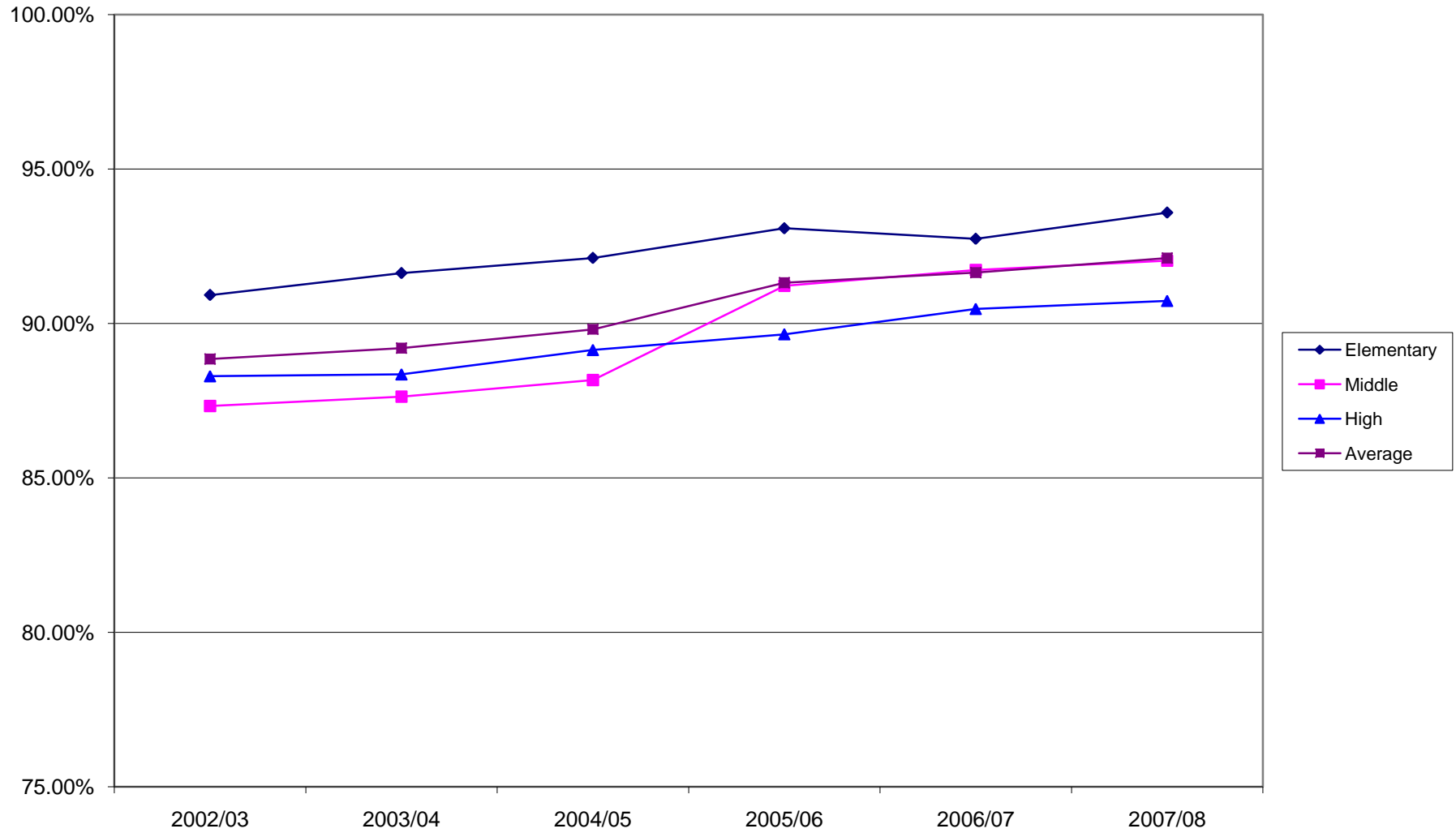




**Pattonville Attendance Rate by Building Level  
2002/03 through 2007/08**



**Rockwood Attendance Rate by Building Level  
2002/03 through 2007/08**



**Valley Park Attendance Rate by Building Level  
2002/03 through 2007/08**



**Webster Groves Attendance Rate by Building Level  
2002/03 through 2007/08**

